

Builders

Magazine

JULY AUGUST 2021

Feature

Natural Gas Plant



Construction of US \$30bn
LNG project in Tanzania to
begin in 2023



Amazon Consultants Ltd is a leading Kenyan Quantity Surveying and Project Management firm founded in 1998 as a partnership and later incorporated in 2007. The Directors are supported by a team of well-trained Quantity Surveyors, Project Managers and dedicated support staff.



- Quantity Survey
- Project Management
- Development Management
- Forensic Audit
- Loss Assessment
- Project Verification
- Project Audit.

Head Office – Nairobi
 Amazon Consultants Limited,
 The Green House,
 3rd Floor,
 Suite 18 Eastern Wing, Ngong Road.
 Tel:+254 20 3860839, +254 20 3860840,
 +254 20 2453081, +254 722 398215

Construction of US \$30bn LNG project in Tanzania to begin in 2023



Construction works on US \$30bn liquefied natural gas (LNG) project in Tanzania is set to begin in 2023. Energy Minister Medard Kalemani announced the plans and said the scheduled date follow the resumption of talks with companies including Equinor ASA. Construction is expected to take about five years.

The billion dollar LNG project in Tanzania has been in considerations since 2014. It however stalled for more than a year under the administration of the former President, the late John Pombe Magufuli who prioritized the East Africa Crude Oil Pipeline project.

Resumption of negotiations

President Suluhu then took charge and directed her administration to fast-track delayed investments on the project. She ordered the resumption of negotiations with

the companies in May, about four months after Equinor’s decision to take a US \$982m impairment on the project following failure to settle fiscal and commercial terms with Tanzania.

“We expect to conclude negotiations for a number government agreement and review production sharing agreements by June next year. Compensation process have been finalized to pave way for the project,” said Kalemani.

The country will involve gas from Shell-operated blocks 1 and 4 and Equinor’s Block 2 being piped from deep-water subsea wells to two or three liquefaction trains at Lindi. These blocks house about 35 trillion cubic feet of recoverable gas, split evenly between the two operators’ assets.

“Meanwhile, discussions are ongoing on another LNG plant which will involve construction of a two- train onshore that will export gas from the country. Other project partners include Royal Dutch Shell Plc, Exxon Mobil Corp., Sophi Energy Ltd. and Pavilion Energy Pte Ltd. A pipeline network to connect and distribute gas to more than 10,000 homes and factories, in the Dar es Salaam is also being developed by the government,” said Kalemani.



S&P SYLDON & PARTNERS

P.O. Box 664 - 00606 Sarit Centre,
Nairobi, Kenya.
Tel: +254 020-44 51 422/44 53 089
Telefax :44 51 423
Mobile: +254 722 861 473 / +254 733 850 848
Wireless: +254-020-528 77 29
Email: info@sandpconsult.co.ke, sylдон@sandpconsult.co.ke

S&P Departments:

SyldonInfra



SyldonServ



SyldonPower



SyldonTel



SyldonEnv



Syldon and Partners is a wholly Kenya owned limited liability firm established in May, 2000 in Kenya to undertake consultancy services in design, installation and maintenance of Electrical, Mechanical Services and Management Information Systems (MIS), Civil and Structural works.

There are two directors, Eng. G.N. Olando – Managing Director in charge of all Electrical Services and general management of the firm. Eng. Calleb Olali is Director in-charge of mechanical services. Other core staff members include Assistant Electrical Engineer John Ruddy Munda and Assistant Mechanical Engineer Felix Ollando.

Eng. H.S Roopra, Eng. Peter Chege are associates of the firm and backstops Eng. Olando and Eng. Olali in all electrical and mechanical assignments respectively. Eng. Victor Ongewa and Eng. Cyrus Njungu are associates in-charge of power sub-stations and transmission/distribution lines respectively.



Off Upper Hill Road,
Upper Hill, Near Citi Bank
Opposite Church of Jesus Christ Of Later Day
Saints, Mount Meru Court, Suite No. 4.

Adama-Awash Expressway construction project in Ethiopia launched



Abiy Ahmed, the Prime Minister of the Federal Democratic Republic of Ethiopia has laid the foundation stone to mark the start of construction of the first section of the Adama-Awash Expressway project along the Ethiopia-Djibouti transport corridor.

The project mainly involves the construction of a 4 lane 60km road that connects Adama city, the capital of the East African country's largest

Oromia regional state, to Nura Era and Wolenchiti. The project, which will be undertaken by a JMC and LRBCL joint venture, also includes the construction of a One-Stop Border Post (OSBP) at Gaulile.

The project is expected to be completed in a period of four years.



Builders' Magazine

Tel: 0794513375 P.o Box 2014 - 20116 Gilgil

info@buildermagazine.co.ke www.buildersmagazine.co.ke

Contributions

The editors welcome news items, press releases, articles and photographs relating to the Construction Industry. These will be considered and, if accepted, published. No responsibility will be accepted should contributions be lost, damaged or incorrectly printed.

© All rights reserved



During the construction phase, the project is also expected to benefit youths, who will receive over 95% of the job opportunities.

Funding for the project

According to the Ethiopian Roads Authority, the construction cost of the Adama-Awash Expressway is estimated to be close to US\$ 154M, and it will be covered by the government of the East African country and the Africa Development Bank (AfDB).

The AfDB through the African Development Fund (ADF) has already committed a US\$ 98M grant for the project.

Benefits of the project

Generally, the Expressway is expected to help alleviate challenges related to traffic congestion and ease traffic flow and consequently ease the burden on the economy caused by traffic disruptions and high transport costs.

According to Dagmawit Moges, Ethiopia's Transport Minister, the current road is playing a crucial role in the country's economy. It is however not up to the required standards and experiences high traffic congestion.

"On average, motorists take up to an hour to travel from Adama to Awash and vice versa. However when completed, driving between Adama and Awash through the Expressway will only take 30 minutes at the most," said Dagmawit.



Shaque Associates
Chartered Quantity Surveyors & Project Managers



Since 1983, Shaque Associates, Chartered Quantity Surveying & Project Management consultancy firm, provide contractors, subcontractors and corporate clients with quality, highly trained staff to assist in the management of projects.

We operate within East and Central Africa, working for a wide variety of clients including: Government bodies, contractors, developers and service companies

Key Services:

- Quantity Surveying
- Project Management
- Value Management
- Planning & Risk Management
- Costs and Procurement Management
- Contract & Legal Services such as Arbitration, Mediation and Alternative Dispute Resolutions (ADR)

Telephone:+254 020 4444026
Mobile:+254 79 5714 040
E-mail:info@shaqueassociates.com

Our Physical Address
5th Floor,
Office No. 2 Western Heights
P.O.Box 14856, 00800
Karuna Road, Westlands.

1st phase of Atlantic Multipurpose Terminal project in Ghana to be operational by Nov 2021



The first phase of the ongoing Atlantic Multipurpose Terminal project, which is currently 71% complete, is expected to be delivered by the end of November this year at the latest, according to Dr. Felix Nana Sackey, the Chief Executive Officer of Atlantic Terminal Services Limited.

“We are at the tail end of the construction of this phase and we believe that come November 2021, this facility would be ready for operations,” confirmed the CEO.

The US\$ 210m project broke ground in August 2019 with Jan De Nul Civil Engineering company as the contractor and Royal Haskoning DVH as the consulting engineer. So far the dredging of a 600m quay wall with -16m depth is completed, with the construction of the capping beam and terminal's yard space of 10 hectares ongoing.



A game-changer in the maritime industry in West Africa

According to Sackey, the berths depth is the critical game-changer in the maritime industry in the West African region as it will position the Atlantic Terminal and the Port of Takoradi at large at a competitive advantage owing to the terminal's ability to receive the largest container vessels in the world.

He also disclosed that state-of-the-art equipment which includes Ship to Shore Cranes and Mobile Harbour Cranes have been procured and that their transfer onto the terminal space will follow gradual procedure.

The entire Atlantic Multipurpose Terminal project is meant for the handling, storage, and delivery of Containers, RoRo cargo, General

Cargo, and Agribulk products such as cocoa and wheat.

It includes the development of an access channel and turning basin of -17.0m deep, two 16m deep berths of 795m long, three 14m deep berths of 900m, as well as road and rail connections.

The total terminal area is 61 hectares.



Classic
Ironmongers Ltd

P.O Box 17915-00500
Nairobi, Kenya

Importers and Suppliers of Architectural Ironmongery, Furniture Fittings and Accessories, Gypsum Boards, MDF Boards, HDF Flooring & Related Products

SHOWROOM
83 Muthithi Road
Tel: 3753404/5/7/8/9. Fax: 3753410
Cell: 0728 975657 / 0770 931700
Email: sales@classironmongers.co.ke

APIC CENTRE
Tel: 3742597/3748577
Fax: 3472474
Cell: 0720 962095 / 0773 519191
Email: apic@classicironmongers.co.ke

KIBHARE CENTRE
Unit B3 Msa Rd
Opp. Nation Media
Cell: 0737 199664 / 0708 367304 / 0775 631211
Email: kibhare@classicironmongers.co.ke

flooring



The term 'flooring' refers to the lower enclosing surface of spaces within buildings. This may be part of the floor structure, such as the upper surface of a concrete slab or floor boards, but typically it is a permanent covering laid over the floor. 'Flooring' can also be used to describe the process of laying flooring material.

There is a wide range of flooring materials available:

Timber

Given that each piece is different, the unique aesthetic of timber is one of the main appeals



for its use as flooring. It can also be very durable although it may scratch and is prone to movement. As timber is hygroscopic (sponge-like), it can be unsuitable for use in rooms that may be exposed to humidity or moisture, although treatment of the timber can make it resistant to moisture.

There are several options for finishing timber, such as wax, oil or lacquer. The two main types of timber flooring are:

Solid: Each board is made from a single piece of wood, typically 18-20mm thick, usually fitted using tongue-and-groove.

Engineered: Each board consists of three or four layers of laminated timber, held together at right angles by glue to create a plank typically of around 14mm thickness.

Laminate

Laminate flooring is a compressed fibreboard plank covered with an image of a material such as timber, stone, tiles and so on that is then given a protective coating. Laminates can be suitable for rooms that wish to benefit from the



aesthetics of a 'natural' floor but at a lower cost, with easier installation, and without the risk of being damaged by scratching. Good quality laminates are durable and may have a 20-year warranty. They require minimal maintenance and may be installed with under-floor heating.



For more information, see Laminate flooring. Vinyl

Vinyl flooring can be supplied in rolls or tiles and is generally fixed by gluing. It can be manufactured in a very wide range of colours and profiles (for example studded) and as with laminate flooring can simulate the appearance of other materials.



The advantages of using vinyl flooring include: It is durable.

It is easy to maintain and keep clean. It is capable of getting wet without buckling, making it suitable for use in bathrooms, kitchens, and so on.

It is easy to instal.

It can be relatively inexpensive. For more information, see Vinyl flooring.

Bamboo

Rather than being wood, this is grass that has been compressed into a floor material, and is nailed down or glued together. It has the advantage of being a renewable resource and water resistant.

For more information see Bamboo flooring.

Cork

Cork is a water-resistant, renewable material that is suitable for a range of spaces, including basement and bathroom installations. Cork can



be clicked together in the same way as laminates or can be glued. Cork floors are warm and flexible although they can be damaged easily by sharp objects.

For more information, see Cork flooring.

Tile (porcelain or ceramic)

There are many options in terms of colour, texture, shape and finishes of tiles. Because of their hardness they are difficult to scratch or





DISCOVER AFFORDABLE LUXURY

THE MARQUIS



SKYMAX ELEVATORS LTD

Elevator/lift service

0722667984/0722523695

Pslyall@skymaxenterprise.com

Charles@skymaxelevators.com

University Way, Nairobi, Kenya



dent, and are also suited to wet environments. However, they are difficult to instal and can break if there is a lack of support beneath the tiles.

For more information, see Porcelain.

Tile (natural stone)

These are generally more expensive than porcelain or ceramic options, but can be more aesthetically pleasing. They need to be properly



sealed when installed, a process that will need repeating occasionally to keep the tiles protected.

Carpet

Carpet is made of an upper layer of pile attached to a backing. The pile is usually wool or fibres such as nylon, polyester or



polypropylene that are heat-treated after having been twisted together into tufts or woven.

There are many varieties of texture, style and colour available and generally carpet is both durable and easy to maintain. Carpet also has insulating properties in terms of both heat and sound. However, carpets can stain quite easily and can be damaged by water and damp.

For more information, see Types of carpet.

Rubber

Rubber flooring is made from natural or



synthetic materials, including recycled rubber tyres. It is categorised as a type of resilient flooring, since it exhibits characteristics of elasticity or 'bounce'. This also makes it suitable for dance floors, restaurants or other high traffic areas where foot fatigue and slippage can occur.





These images are an artist's impression



Esteel Construction Ltd
 P.O. Box 3713-00506 Nairobi, Kenya
 Tel: +254 20 2679822/231 6553
 Email: info@esteelconstruction.com



Rubber flooring is also becoming a popular option for domestic installations. It's being used for children's playrooms, shower and bath rooms, garages, home gymnasiums and other applications that tend to require moisture and stain resistance, sound absorption, durability, elasticity and temperature stability.

For more information, see Rubber flooring.

Poured floors (mastic asphalt and polymeric)

Mastic asphalt and polymeric floors are poured as liquids and spread out across surfaces to harden and cure. This creates a finish without seams. While asphalt and polymer flooring options are not especially common, they do have advantages in both commercial (especially industrial) and domestic applications where water protection and durability are high priorities.

For more information, see Mastic asphalt flooring and Polymeric flooring.

Domestic flooring

It is most common for domestic flooring to be installed on a room-by-room basis rather than using one material throughout. Different rooms have different requirements from their floorings.





NCA1 RADIANT POWER SYSTEM
Registered Electrical Contractors



Thakkar brothers



Ojjo Apartments



Ruaka Apartments



Trident Estate -2



Adams mosque



South Park

Specialist in:

- Commercial Developments
- Industrial Developments
- Warehouses and Business parks
- Hospitals and Clinics
- Apartment Blocks
- Residential estates
- Educational Institutes
- Hotels, Restaurants and Lodges
- Refurbishment and fit out projects

Installation Of:

- Power and Lighting
- LV Switchgear and Standby
- Generators
- Fire Alarms Systems
- AVR & Surge Protection
- Data/Telephone Cabling



13- Office Suits,
P O Box - 39130 - 00623.
Parklands, Nairobi, Kenya.
+254 772 762 743
+254 738 948 707
info@rpskenya.co.ke
www.rpskenya.co.ke



Bedroom: The most popular choice is carpet, although wood, laminate, or vinyl are suitable.

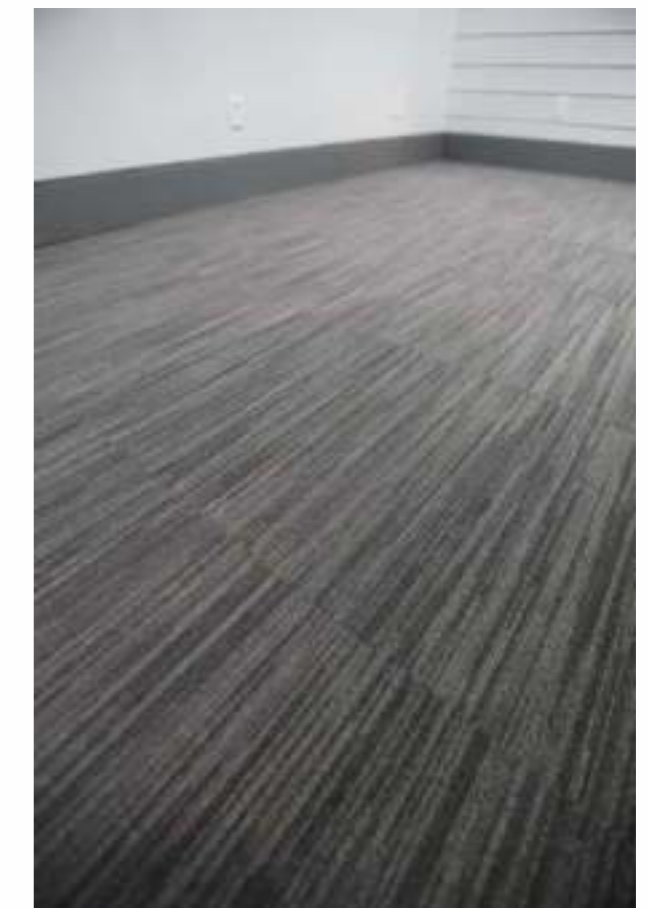
Kitchen: Vinyl is a popular choice as it isn't affected by water, is easily cleaned and has durability. Tiles and laminate flooring are also options.

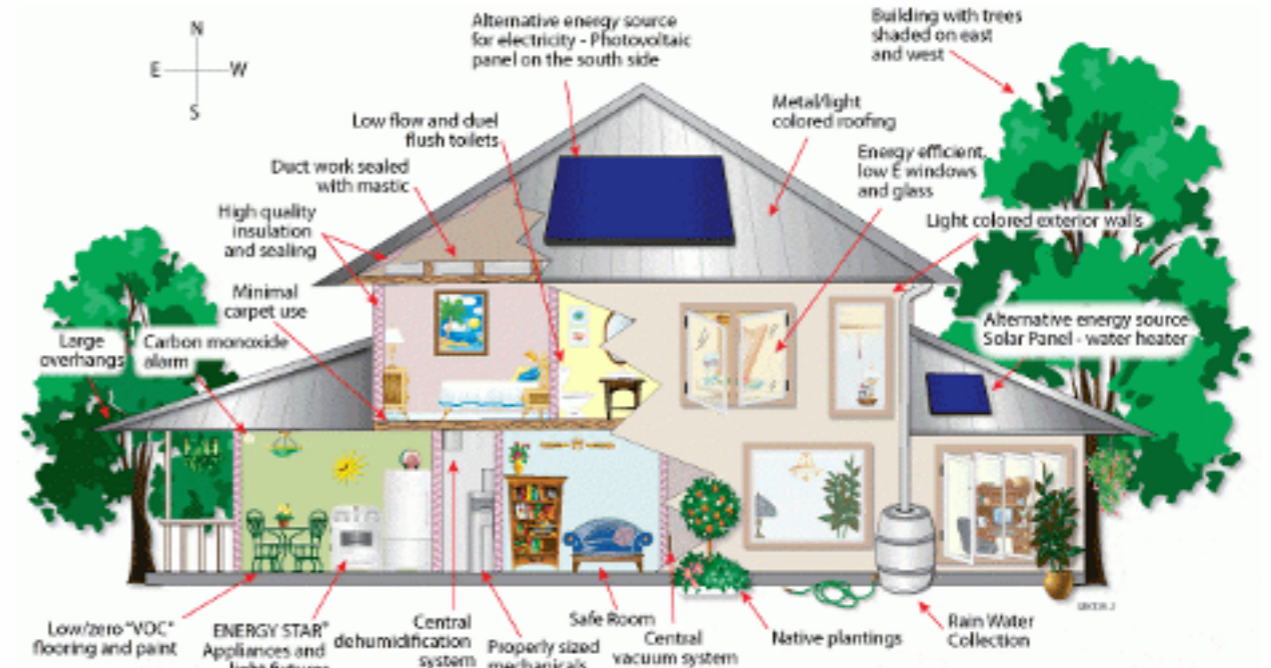
Lounge/dining room: The flooring decision is likely to be down to aesthetic preferences, as all floor types are suitable.



Landings/stairs: The majority of upstairs areas are carpeted as occupants will most likely be walking around without shoes and harder flooring can be noisy.

Bathroom/wet areas: Untreated timber is unsuitable for these rooms, and carpets can become wet and unhygienic. Vinyl and tiles are





GEOMAX CONSULTING ENGINEERS LTD.

3.) Roofing

Some of the green roofing alternatives available include combined cedar tiles that resist moisture, insects and mildew as well as solar reflective roof tiles which are very useful during hot seasons.

4.) Insulation

This addresses energy conservation. Instead of using the health hazardous asbestos, you should consider sustainable insulation materials

recycled newspapers or plastic.

5.) Cement

Modern cement technologies are engineered to be more environmental friendly. Porous cement, mostly used on driveways and walkways, allows water to sink in through the pores to avoid damaging the waterways.


Light coloured concrete is on the other hand very useful in urban areas to prevent overheating.



Geomax Consulting Engineers Ltd offers the following services;

- i. Electrical Engineering Services
- ii. Mechanical Engineering Services
- iii. Electronic Engineering Services
- iv. Specialised Building Consultancy Services (Solar Power, Energy Audits, Energy Management etc.)


St. Hellen Lane off
Langata Road, Karen


+254 20 38 73430
/808/816
+254 722 207 236

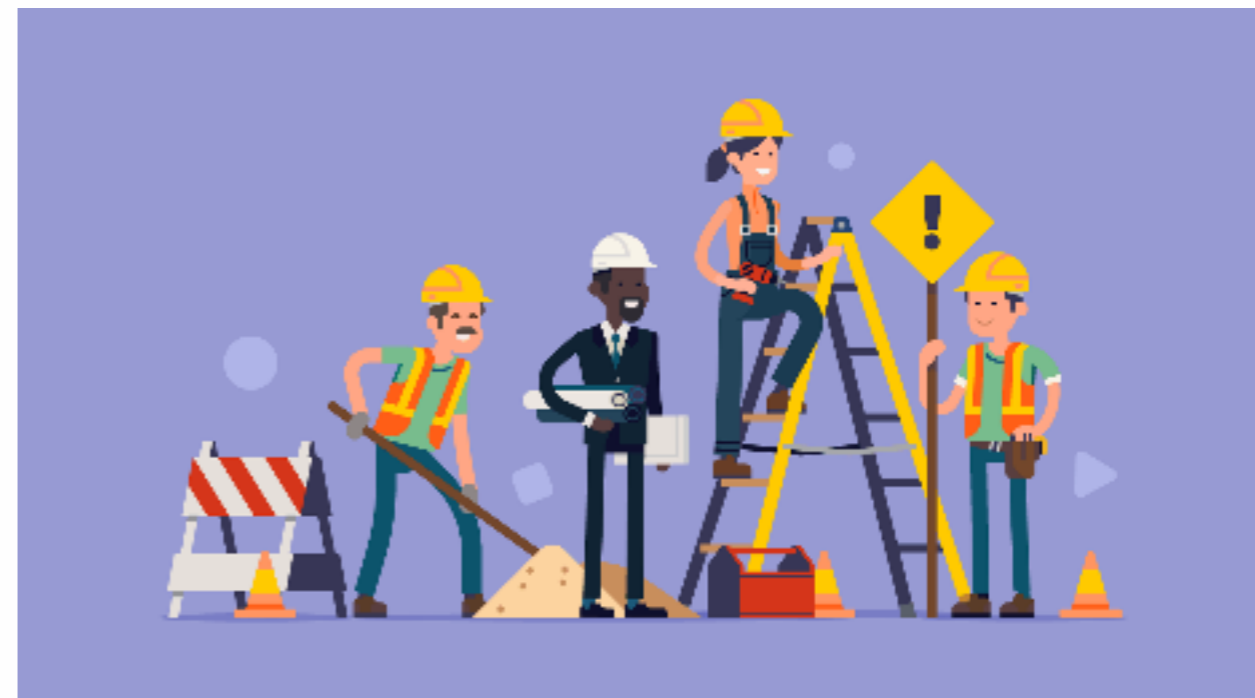

P.O Box 53748 - 00200
Nairobi - Kenya

Membership, Affiliation and Accreditation

Engineer's Board of Kenya.
Ministry of public works
Ministry of Energy and Petroleum
Energy and Petroleum Regulatory Authority.
Association of Energy Engineers.
ISO 9001:2015

SALFO WATERPROOFING SOLUTIONS LTD

6 QUALITIES OF THE TOP CONSTRUCTION COMPANY TO HIRE



Whether it's your home, a new facility for your business, or even a larger commercial project, the building contractor you hire will either make or break your construction project.

Hiring the wrong construction company can lead to poor quality work, delays, and even legal issues. You want to be proud of the new home or office once the project is complete. It's, therefore, important that you find the right contractor for your project. Here are some of the most important qualities to look out for when hiring a contractor for your construction.

Goodwill and Reputation

Don't be so quick to select a construction company. Take time to conduct market research and analysis. Otherwise, how will you determine whether or not they are reliable and dependable? Asking for recommendations from friends and family is a good start but make sure the contractor provides you with a list of their former clients. If they aren't willing to share information about their past clients or projects, walk away.

Credentials

Does the contractor have the relevant licenses, registrations, and trainings to perform the job effectively? This should be the first thing you ask about. A company that doesn't have the necessary credentials isn't worth your time, effort, and money. Having these credentials means they are professional and reliable. Be sure to verify them before hiring the contractor.



Mr. John Wanjohi
0724292630
salfowaterproofingsolutionsltd@gmail.com



deliver its given projects in time without compromising on quality.

Sound Management Team

It's is beneficial to know the company's pas work as you'll have an idea about their management skills. A good company always maintains excellent communication with its client. Furthermore, decisions are made by a team of experts and not an individual. Sound management ensures your project is completed on schedule, within

budget, and without any drawbacks.

Rich Portfolios

As mentioned, you should find a company with vast experience in the construction industry. An experienced company will have a rich portfolio of past executed construction projects. Take time to explore the company's previous and ongoing projects so you can know their quality of work.

When it comes to pricing, it's best you obtain quotes from several contractors so you can compare and find your optimal price range. Keep in mind that the lowest bid isn't always the best deal. On the other hand, the highest bid may not necessarily mean above average quality. Find the contractor with the best quality service at a reasonable price.

Expertise and Experience

The company's level of expertise can be seen from their registration, license, accreditation, credentials, trainings, awards, and distinctions. They shouldn't just talk of their expertise but be able to back up and verify those claims with tangible proofs. Experience is also an important factor when choosing a construction company. An experienced contractor, and one who has successfully handled similar projects in the past, is likely to complete your project successfully.

Timely Project Delivery

Every construction project is supposed to have a commencement date and a targeted date of completion. A reliable contractor should be able to deliver your project as at when due. Avoid any construction company that has failed in this area before. Find an experienced contractor that



GADGETMEND

REALTIME INTERGRATED SOLUTIONS



**Contact Us
GADGETMEND INTERNATIONAL LTD
(KENYA)**

P.O Box 66459-00800 Nairobi, Kenya.
Kenya: +254 722 682 594, +254 734 522 988
United Kingdom: +44 7744369900
Email: support@gadgetmend.com

GADGETMEND LLC (USA)
Mail Address 6133 W MarketBloomington, MN
5425
United States: +1 612 460-7315



AGM HITECH ENTERPRISES





Zaf Holdings Warehouse, Baba Dogo Road 2 Nairobi
0703 500 547
solutions@chameleon.co.ke

WWW.CHAMELEON.CO.KE



CATALYST
Group of Companies

FIRAT

KODSAN
Hydraulic Solutions



EVOLUTIONARY
ENERGY
SOLUTIONS



Authorized Distributor of

TRANE



0703-500 547 | 0706-777 444 | solutions@chameleon.co.ke