

# BUILDERS MAGAZINE

**BM DECEMBER JANUARY 2024**



**Specialist in:**

- Commercial Developments
- Industrial Developments
- Warehouses and Business parks
- Hospitals and Clinics
- Apartment Blocks
- Residential estates
- Educational Institutes
- Hotels, Restaurants and Lodges
- Refurbishment and fit out projects
- Supermarkets and Retails

**Installation Of:**

- Power and Lighting
- LV Switchgear and Standby
- Generators
- Fire Alarms Systems
- AVR & Surge Protection
- Data/Telephone Cabling

13- Office Suits,  
P O Box - 39130 - 00623.  
Parklands, Nairobi, Kenya.  
+254 772 762 743  
+254 738 948 707  
info@rpskenya.co.ke



EPRA-A1

NCA1

**RADIANT POWER SYSTEM**

*Registered Electrical Contractors*

# YOU CREATE THE VISION WE CREATE THE BRICK

DISCOVER THE POSSIBILITIES.



Corobrik's clay face brick & paving range offers you versatility in design & durability that lasts a lifetime.



[www.corobrik.co.za](http://www.corobrik.co.za) | [info@corobrik.co.za](mailto:info@corobrik.co.za)



# GAHIR ENGINEERING WORKS LTD.

Mechanical Engineers & Manufacturers

Quality never goes out of style

Gahir engineering works limited has consolidated its footprint as one of the leading construction machinery manufacturer in Eastern Africa. From the humble beginnings of a dealer in general repair jobs in engineering industries and construction equipment to the largest manufacturer of a wide range of quality industrial and construction machinery. Established in 1977, the company can look back on a successful story of growth and product development; having supplied numerous products to prestigious projects.

With more than 46 years of experience, the company works closely with their clients to develop innovative solutions and turn-key engineered solutions centered on industrial and construction sectors. The aim of this rapport is to provide every client with continuous preferences over the long term.



Quarry Equipment Feederes & Crushers

The company's capabilities extend to the manufacture of Desco Intro-Lock Block Machines for use in design, so that they can be teamed with feeding the concrete mix to the machine and handling the block from the machine to stock piling yard; hence giving a smooth,



mild-steel-hydraulic-cage-lift



Platt Type Block Machine



Lay Type Block Machine

totally integrated operation that saves time and money for the best end results from block machines. The product is too convenient since it is simple in design with few moving parts, less vibration and easily maintained. Furthermore, it is portable and semi-automatic with either electrical diesel or petrol driven engines. This machine is particularly suitable for operation in remote areas with or without electricity supply and with a team of unskilled labor.

They have a fully equipped tool room and staff with experience and market know-how capacity coupled with a brilliant engineering team that is equipped with the latest technology.

Gahir engineering works can provide a total tooling solution for customers from design and manufacture through product sampling and production. For instance, it has the equipment for processing waste and surplus dust available in quarries which can be utilized instead of sand.



Conveyer Belts & Crush Plant

The dust available in quarries over time accumulates with fine dust and soil which has to be washed before use. The firm's aggregate washing plant cleans the dust ready for use in the construction industry. The Firm uses these to excel in the market and to succeed in this dynamic business environment.

Since its inception, Gahir engineering works has successfully undertaken several works for various clients ranging from government and institutional facilities to private and commercial clients.



Pan Mixer Machine

They have a large database of satisfied clients. National concrete company, Orbit enterprises, Sirikwa quarry in Eldoret, Ndugu transporters in Kisumu and Tororo cement factory in Uganda are recent clients that the company has supplied complete vibrating screens, grizzly feeders, and conveyors.

With the current trends of constructing multi-storey buildings and storage Go-downs, moving and storing of goods is tedious.

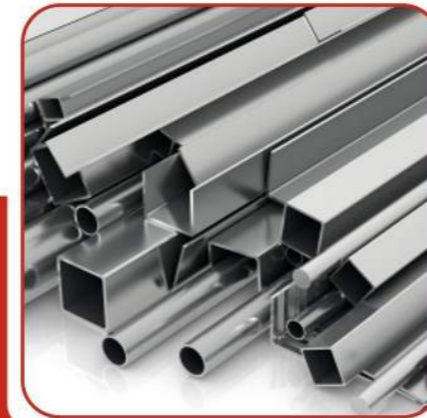
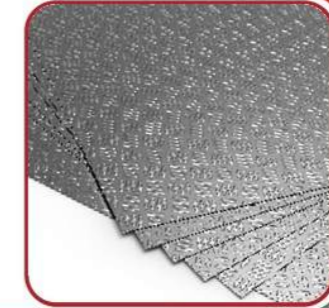
Due to its experience and understanding of its clients' needs, Gahir engineering works manufactures goods-lift or hoist machines that can lift goods weighing a tone or more. The company has installed such lifts in Nakuru, Kisumu and Kitale.

Apart from that, the company has cemented its rapport with international clients where they export some of their products to Tanzania, Uganda, and Sudan are some of the countries where Gahir engineering works, exports its product.



An ISO 9001:2015 Certified Company

ALUMINIUM



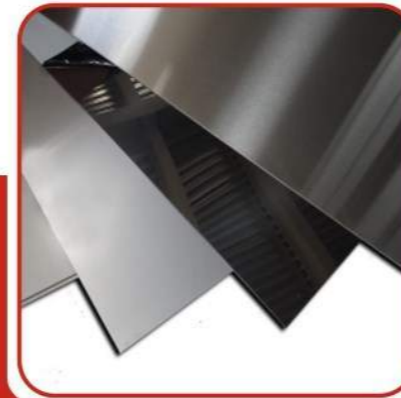
STAINLESS TUBES



MILD STEEL



ENG. STEEL



STAINLESS SHEETS



BRASS



SEAMLESS PIPES

// kens STAINLESS®

STAINLESS STEELS CARBON STEELS CAST IRON TOOL STEELS COPPER ALLOYS ENGINEERING STEELS MILD STEELS SEAMLESS PIPES  
WEAR RESISTANT STEEL ALUMINIUM ENGINEERING NYLONS CASTINGS GAS BURNERS LASER CUTTING WATERJET CUTTING BRASS IRONMONGERY

We are proud to be supplying Gahir Engineering Works and the East Africa region for over 40 Years

Enterprise Road, Industrial Area, Nairobi - Kenya

(+254) 0207 903903 , 751 914173

sales.ind@kensmetal.co.ke

www.kensmetal.co.ke



Cabro Block Machine Moulds

"The government has to come out and save local industries," he advises, "they have to make imported products expensive to save the market". According to Gahir, political instability in Sudan has affected the market. Furthermore, cheap and sub-standard products have not only, affected the Kenyan market but also Tanzanian and Ugandan markets.

The company maintains a long-standing rapport between themselves and the clients after completion of the projects by visiting the sites and providing professional advice which provides the comfort of knowing they stand behind every job.

Amarjit Sing Gahir one of directors, urges clients to go for quality products. "People suffer after buying sub-standards products," he adds. He cautioned clients to go to a company which can be held accountable of their products. According to Mr. Gahir, the right products have to be used for the right purpose not looking at the price since the end result is better.

As a future solution, Gahir engineering works limited gives you an ideal alternative in manufacture and supply of different types of construction machinery such as concrete mixtures, pan concrete mixers, heavy duty desco machinery; and other machinery for wood work such as circular saws, roller benches, band saws, breakdown and planners. The company is based in Nairobi, Pate road, off Lunga-Lunga road, Industrial area.

**SUNMASTER PAINTS**  
*"Colour Power, Cover Power"*

Long lasting Solution for you

**CONTACT US ON: 0736 739665 | 0732 223332 | 0725 083354**



**CONGRATULATES**

**Gahir Engineering Works** on their 40 years of establishment in Kenya.  
 We are proud to be associated with you.



**SS Mehta & Sons Ltd** is an established, experienced and highly geared Civil Engineering establishment. The company delivers a full scope of Civil Engineering works on several sites at any given time. We operate both as the principal contractor for projects both in the private and public sector with an extensive client base ranging from international donor organizations, city councils, local authorities, developers and national and international airports. The company is able to and has undertaken projects of varying contract values that extend up to over 10 Billion Kenyan Shillings. Additionally, the company is fully facilitated to operate several projects simultaneously, even if sites are geographically located far apart from one another.

**Head Office:**

P.O Box 41853 - 00100 Nairobi Kenya | **T** +254 020 214 6813 | **M** +254 722 872 202 / 733 262 580  
**F** + 254 020 214 6888 | **E** infonbi@ssm.co.ke

**Branch Office:**

P.O. Box 41247 Mombasa Kenya | **T** + 254 041 222 3379 | 231 4454 | **M** +254 722 412 867 / 733 412 867  
**F** + 254 041 222 5425 | **E** ssmeha@swiftmombasa.com



GEBS Security Group is offering exceptional security services through trained, licensed and an expert team of professionals. Being one of the leading security companies in South Africa, our unsurpassed protection is rendered at the shopping arcades, construction sites as well as industrial locations. We are proficient in providing comprehensive security solutions.

**Our Services:**

**Building & Construction Site Protection**

**Asset Protection**

**Industrial & Residential Protection**



**These Construction Projects Were built By Group Five.**



Email Us: [echaweza@gebs-group.com](mailto:echaweza@gebs-group.com)

## KENYA BUILDING & CONSTRUCTION MARKET ANALYSIS 2024

Kenya stands as the proud home to Africa's towering skyscrapers, with numerous projects underway in both governmental and private sectors. A total of 17 skyscrapers have already surpassed the 100-meter mark, showcasing the nation's commitment to urban development.

In 2021, the Kenyan construction market exhibited a robust value of \$16.6 billion, and projections suggest an Annual Average Growth Rate (AAGR) exceeding 5% from 2024 to 2026.

This anticipated growth is attributed to strategic investments in pivotal sectors such as transportation, electricity, housing, and manufacturing.

A key initiative involves the construction of 10,000 housing units, contributing significantly to the sector's expansion.

The latest data from the Kenya National Bureau of Statistics (KNBS) for Q3 2022, coupled with leading indicators, indicates a robust economic performance.



The nation experienced a notable 4.7% increase in Real GDP during this period, primarily fueled by vibrant activities in wholesale and retail trade, education, electricity and water, as well as the real estate sector. The surge in construction activity can be directly linked to Kenya's flourishing economy.

The National Construction Authority (NCA) processed 8,154 project registration applications in the previous year, as revealed in the recent Status of the Build Environment Report by AAK. Notably, the approved projects carried a total cost of Sh280.9 billion.

Looking ahead to 2024, Kenya's construction landscape includes a 30 million euros (\$32 million) investment in constructing eight sports facilities.

A significant infrastructure project is the development of a 104km four-lane stretch from Kisian in Kisumu to the Busia border town, accompanied by an 11km link road between Kisian and Kisumu bypass. Additionally, a 127km stretch between Jinja and Malaba. This initiative is an extension of the \$1.48 billion Kampala-Jinja expressway, slated for completion by 2025.

Kenya Railways has initiated Phase 1 of The Nairobi Railway City project, an endeavor with an estimated cost of KES12 billion (\$95 million). The groundbreaking ceremony, held at the Nairobi Central Railway station in December, marked the commencement of this transformative urban development project. The Kenyan Government's vision for 'The Nairobi Railway City' involves the redevelopment of Nairobi Central Railway station and its environs into a multimodal, transit-oriented urban hub.



## sustainable & long term WATER STORAGE SOLUTIONS

### Pressed Steel Sectional Water Tanks

Pre-tank tank capacities range from **1 500 litres to 4.2 million litres** designed to SANS 10329:2004 guidelines and SANS structural codes. Our **Hot Dipped Galvanising** units are **easily transported** and **assembled** on even the most remote sites.

**Specialists in the manufacturing of domestic and industrial water storage.**

Structa Technology is a Level 1 BBBEE Contributor, and is part of the STRUCTA GROUP of Companies

MEYERTON | Tel: 016 362 9100  
 watertanks1@structatech.co.za | Director: Rodney Cory  
 rodney@structatech.co.za | 082 575 2275 | www.prestank.co.za

Manufactured in SOUTH AFRICA

## Airtec Systems Limited

We can offer comments/advice on how your building can affect the type of air conditioning system proposed.

**Our Range Of Products**

- Chillers
- Air handling units and fan coil units
- Direct expansion packaged units
- Mini split units, Outside air units
- Rooftop package units
- Precision control units

Telephone: +2341-3450559, 7744816, 4708588, 0802 223 8170 Fax: +2341-4963736  
 Email: airtec@mwebafrica.com, airtec@hyperia.com Website: www.airtecng.com  
 Abuja Address: 22 Djibouti Crescent, Wuse II, Abuja Postal: P.O.Box 5830, Ikeja,



### TCCL Overview

Tower Cost Consultants Limited is a well-established professional Construction Consultancy firm offering Quantity Surveying, Building Economics, Project Management, and all related consultancy services as regards to building & civil engineering works. They have over 20 years of experience and have completed over 1,000,000.00 square meters (plinth area) of projects.

### Our Mission

Become a leading Quantity Surveying firm aiming at lasting relationships with our customers, by exceeding their Quality Expectations and gaining their Trust through enhanced financial & technical Performance. We are committed to deliver our Services by engaging our talented and passionate professionals with the latest technology, in a friendly environment and safe manner.

### Our Vision

To Enrich the African Life Spaces by providing Eminent Construction Consultancy Services.

### Values

- ◆ Professionalism
- ◆ Passion
- ◆ Reliability
- ◆ Integrity
- ◆ Honesty

Our primary goal is to provide all our clients with the highest standard and comprehensive Quantity Surveying Services.

### Introduction

Tower Cost Consultants Limited is a well-established professional Construction Consultancy firm offering Quantity Surveying, Building Economics, Project Management, and all related consultancy services as regards to building & civil engineering works.

The company was founded in the year 2000 and incorporated in the year 2014. Tower Cost in itself is an entity with extraordinary capacity and great potential with over 20 years of expertise & growing; the sky is the limit for this Quantity Surveying & Construction Consultancy firm.

The firm boasts of over 1,000,000.00 square meters (plinth area) completed to client satisfaction.

We currently operate within the East African region. As Quantity Surveyors, we are involved in and have successfully completed various projects including but not limited to Hotels, Hospitals, Residential Housing schemes, Office blocks, High-rise apartments, and low-cost housing.

The company is backed by competent and experienced administration, technical, and financial staff and is stocked with sufficient resources & ICT to handle all sorts of construction works.



# PLUMBUILD & ENGINEERING LTD

Plumbing, Drainage, Sanitary, Solar systems, Fire Fighting, Sprinkler Installation.  
Installation of Pressed Steel & GRP water tanks.  
Maasai Road, Off Mombasa Road, Hari Industrial Park. P.O Box 5111 – 00506 Nairobi, Kenya.  
Tel: 0736 521030 Email: info@plumbuildke.com / plumbuild2010@gmail.com  
WEB: www.plumbuildke.com

### Some of our past Projects;

- *Mwatha Plaza, Wood avenue Hurlingham Nairobi*
- *Fair field garden estate Syokimau - Nairobi*
- *Purple Haze apartments, Kitale lane Kilimani - Nairobi*



**We are proud to be associated with Tower Cost Consultants Limited**

This profile endeavors to illustrate the technical, administrative, and financial capability of the company. Continuous improvement, benchmarking & best practice are the epitome of our undertaking.

This ensures that we are able to complete every job with our signature mark of quality Quantity Surveying services. It is our endeavor to deliver each job to schedule, whatever the size and with necessary cost consciousness, cost savings of which are happily appreciated by our clients.

We believe in teamwork & work closely with all lead consultants, contractors, sub-contractors, suppliers to ensure buildability, efficiency, and cost economies.

### Our Range of Services

Tower Cost Consultants Limited provides consultancy services in fields of urban and rural development, building construction, and civil engineering. These specialized services include:

- ◆ Quantity surveying and building economics services
- ◆ Construction cost management and administration.
- ◆ Project and construction management
- ◆ Analysis of construction claims.

- ◆ Claims protection and management for clients.
- ◆ Services in connection with arbitration and/or litigation.
- ◆ Feasibility studies and property financing advice.
- ◆ Property development and valuation.
- ◆ Loss assessment services for insurance purposes.
- ◆ Life cycle costing and estimates of annual running costs.
- ◆ General consultancy services in the fields of property development, construction, and civil engineering.

Tower Cost Consultants Limited customizes these services to take into account the life cycle of a construction project as detailed in the following stages:

#### 1. Design Stage/Pre-Contract

- ◆ Budget Estimate
- ◆ Project Management
- ◆ Cost planning and control
- ◆ Feasibility studies/Developers Budget
- ◆ Preparation of cash flow projections
- ◆ Preparation of Bill of Quantities and specifications
- ◆ Tendering procedures and advice on contracts
- ◆ Tender evaluation and reporting
- ◆ Negotiation with contractors

#### 2. Contract Stage/Post-Contract

- ◆ Preparation of interim valuations
- ◆ Evaluating variations and claims
- ◆ Preparation of Financial Appraisal
- ◆ Preparation of final account



ALI FABRICATION SOLUTIONS LTD is a leading aluminum fabrication company in Kenya, with a proven track record of delivering high-quality products and services to our clients. We are proud to be associated with Tower Cost Consultants Limited, one of the most respected cost consultancy firms in the country.

We offer a wide range of aluminum fabrication services, including:

- ◆ Windows and doors
- ◆ Facades
- ◆ Balconies
- ◆ Handrails
- ◆ Gates
- ◆ Cladding
- ◆ Railings
- ◆ And more

We are proud to be associated with Tower Cost Consultants Limited



We use the latest technology and equipment to ensure that our products are of the highest quality. Our team of experienced professionals is committed to providing our clients with the best possible service. We understand the importance of communication and collaboration, and we work closely with our clients to ensure that their needs are met.

### Contact us

Godown 21 Fortis Industrial Park, Off Mombasa Rd.  
 (+254)721 691 786

info.alifab@gmail.com  
 www.alifabsolutions.com



### Others

- ◆ Fire loss assessment and valuation for insurance purposes
- ◆ Construction project management / Building Management
- ◆ Life cycle costing
- ◆ Dilapidation reports for maintenance work
- ◆ Estimates for building loans for banks and other financial institutions
- ◆ Construction dispute resolution

### 3. The Practice

The firm utilizes computer programs and techniques for all aspects of their services. The practice recognizes that particular clients and governments have their own procedures and requirements for the provision of consultancy services, and our services are based upon and adapted to an individual client or project.

Computer techniques form a large part of our service to provide an efficient service and to provide clients with additional information not always available with traditional quantity surveying methods.

Computer techniques for all costs and management services are recognized by the practice as essential for the efficient and proper provision of consultancy services.

The company has experience in providing consultancy services in different countries where consultancy procedures, documentation, and techniques may vary considerably. The practice provides its services with a basis towards cost management so that agreed budgets are controlled to contain unauthorized expenditure. The project costs are controlled from feasibility and preliminary estimates to tendering and through the construction process up to the completion of the final account.

Where construction or project management services are utilized, services are adapted to suit management methods and systems. Normal services will not be suitable for management contracts which would normally require:

- ◆ Fully detailed estimates and cost reports for management budget control systems.
- ◆ Accurate cash flow projections.

- ◆ Production of non-standard tendering documents.
- ◆ Formulation of contractual conditions for construction management work package contracts.

Tower Cost Consultants Limited has instigated these systems on a number of projects and construction management contracts.

Management contracts in the right environment and with a suitable project team can achieve savings on normal construction contracts. The cost management services in this regard are most important.

Tower Cost Consultant has achieved significant identifiable savings with actual projects in conjunction with construction management services.. Contractual matters and issues form a major part of the practice's services. A great deal of attention to contractual matters is made in the production of tendering documents so that disputes related to poor documentation are avoided.

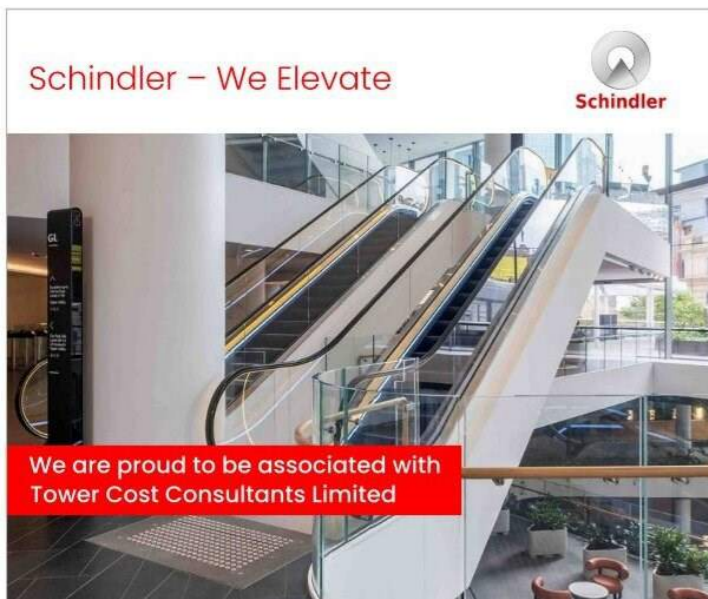
The practice had much experience in claims and contractual matters that have arisen on construction projects.

### Office Infrastructure

The practice has physical working offices which are fully equipped, well furnished and staffed facilities including comprehensive and sophisticated computer software and hardware.

All documentation is generated and processed on computers using current software, cloud connection, strong internet connections and e-mail links.

All printing, photocopying, and binding services are done in-house with each computer networked to access the various shared facilities within the office. The close co-ordination and communication between the various personnel allows the practice to readily adapt to the particular circumstances of any given project.



**Schindler – We Elevate**


**We are proud to be associated with Tower Cost Consultants Limited**

We move more than 2 billion people every day with our elevators, escalators, and moving walks. Schindler has been pioneering vertical transportation and mobility solutions since 1874.

Transportation solutions for all building types

Passenger elevators Escalators Moving walks Destination dispatch

**We Elevate** [www.schindler.com](http://www.schindler.com)



**SENTRIM Contracts Ltd**

**We Are Proud To Be Associated With Tower Cost Consultants Limited**

Sentrim Contracts Limited: Transforming dreams into reality in the heart of Kenya. With years of industry leadership, we specialize in delivering superior construction solutions for residential and commercial projects. Our dedicated team ensures precision, reliability, and timely completion, building not just structures but enduring relationships. Trust Sentrim Contracts to shape your dreams with a commitment to excellence that stands tall in Kenya's skyline.

P.O. Box 43436 - 00100 Nairobi, Kenya  
Tel: 0721 390 653  
BUTERE #3, Opposite NANAK CAR PARTS  
BUTERE RD - NAIROBI  
e-mail: [sentrim@sentrim.co.ke](mailto:sentrim@sentrim.co.ke)  
[www.sentrim.co.ke](http://www.sentrim.co.ke)

**Publisher:**  
**BARAKA PUBLISHERS t/a BUILDERS MAGAZINE**

**KENYA OFFICE**  
**Tel: 0794513375 P.O Box 214-20116 Gilgil**

**Email: [info@buildersmagazine.co.ke](mailto:info@buildersmagazine.co.ke) Website: [www.buildersmagazine.co.ke](http://www.buildersmagazine.co.ke)**

**Contributions**

The editors welcome news items, press releases, articles and photographs relating to the Construction Industry. These will be considered and, if accepted, published. No responsibility will be accepted should contributions be lost, damaged or incorrectly printed.

© All rights reserved

Seyani Brothers is a leading construction and General Building Contractors in Kenya, with a proven track record of delivering high-quality projects on time and within budget. We are proud to be associated with Tower Cost Consultants Limited, one of the most respected cost consultancy firms in the country.

We are proud to be associated with **Tower Cost Consultants Limited**



- Office building services
- Tower building services
- Apartment building services

**Contact us today**

 **The Oval, Parklands/Highridge, Nairobi**  **0702 135460**

 **info@seyanibrosk.com**

 **www.seyanibrosk.com**

## Our Experience

### RESIDENTIAL DEVELOPMENTS - HIGH-RISE APARTMENTS

- ◆ The Residence Along One General Mathenge Drive,
- ◆ One General Mathenge High-end Apartments Along One General Mathenge Drive,
- ◆ Rumaisa High-end Apartments Along Riverside Gardens off Riverside Drive,
- ◆ Trident Grand Riverside (Tower 1 & 2) Along Riverside Drive,
- ◆ Purple Haze Apartments Along Kitale Lane off Dennis Prit Road
- ◆ Solitaire Development Limited Along One General Mathenge Drive
- ◆ Maisha Makao, Tilisi
- ◆ Eighty-Eight Nairobi Upper Hill
- ◆ ONE23 General Mathenge Along General Mathenge Road, Westlands
- ◆ Oshwal Park Along Second Parklands Road, Parklands
- ◆ Oshwal Road Apartments Along Oshwal Road, Ngara
- ◆ City Park Apartments Along City Park Drive, City Park
- ◆ Muthangari Drive Apartments Along Muthangari Drive, Westlands
- ◆ The Saruni at Riverside

- ◆ Verona Apartments along Muthangari Drive

- ◆ Bentley Park Apartments

### RESIDENTIAL DEVELOPMENTS - LOW-RISE APARTMENTS

- ◆ 5 Star Gardens Along Mombasa Road
- ◆ Iregi Road Apartments Along Iregi Road, Parklands
- ◆ Greenpath Apartments Along Chania Avenue, Kilimani

### RESIDENTIAL DEVELOPMENTS - HOUSING SCHEMES

- ◆ 5 Star Kiambu Meadows, Kiambu
- ◆ Phenom Estate, Langata
- ◆ Phenom Park, Langata
- ◆ Delta Plains Along Mombasa Road, Mlolongo
- ◆ Leopard Beach Villas at Diani, South Coast
- ◆ Maisha Mema, Tilisi
- ◆ Tilisi Views, Tilisi
- ◆ Lavington Villas, Lavington
- ◆ Maxima Apartments Along Shanzu Road - Spring Valley
- ◆ Chalbi Drive Houses Along Chalbi Drive, Lavington

### OFFICES AND OFFICE

- ◆ Fortis Tower Along Woodvale Groove,
- ◆ Senteu Plaza At the Junction of Lenana Road and Galana Road
- ◆ Delta Suites Along Waiyaki Way,

- ◆ Elgon Place at the Junction of Elgon Road and Upper Hill Road
- ◆ Karen Landmark (Landsdown, Karen)
- ◆ The Node - Karen Along Langata Road, Karen
- ◆ Karen Green Along Langata Road, Karen
- ◆ Riverside Place Along Riverside Drive, Westlands
- ◆ Victoria at Two Rivers Two Rivers
- ◆ Pramukh Tower Along Westlands Road, Westlands
- ◆ Delta Chambers Waiyaki Way, Westlands
- ◆ Galleria Office Park Along Langata Road
- ◆ Muthithi Road Offices Along Muthithi Road, Westlands
- ◆ 67 Lenana Place Along Lenana Road, Kilimani

#### **HOTELS**

- ◆ Sarova Woodlands Hotel Off Nairobi - Nakuru Highway, Milimani Area, Nakuru
- ◆ Park Inn Hotel at Westlands off Waiyaki Way
- ◆ The Concord Along Wang'apala Road, Parklands
- ◆ Marijani Beach Resort Pwani Mchangani, Zanzibar
- ◆ Hyatt Place and Hyatt House
- ◆ Along Lower Kabete Road, Westlands
- ◆ Billionaires Casino at Malindi

- ◆ West End Hotel Along Stima Lane off Lower Kabete Road
- ◆ Grandwest Hotel and Apartments along Karuna Road, Westlands
- ◆ Rosslyn House Hotel Along Redhill Road, Kitisuru
- ◆ Sarova Panafric Hotel, Along Valley Road, Nairobi
- ◆ Giraffe Hotel in Dar Es Salaam
- ◆ Leopard Beach Resort

#### **BANKING FACILITIES**

- ◆ Renovations and Partioning of ABC Banks, Kenya

#### **WAREHOUSE AND GODOWNS**

- ◆ Lab and Allied Along Mombasa Road
- ◆ Mega Paper and Boards, Nakuru
- ◆ Transmara Sugar Mills, Transmara
- ◆ Equator Bottlers, Kisumu
- ◆ Fortis Industrial Park Along Mombasa Road
- ◆ Carton Manufacturers factory in Industrial Area
- ◆ Platinum Packing factory along Kutch Road, Mlolongo
- ◆ Bonded warehouses in Industrial Area
- ◆ Warehouses Along Nairobi - Mombasa Road
- ◆ Extensions to Raw Materials store, Nairobi
- ◆ Extensions, Offices & Godowns Along Nairobi - Mombasa Road
- ◆ Premium Hygiene Products Limited Factory in Thika
- ◆ Ramoda Ceramics Limited Factory in Isinya
- ◆ Penicillins & Co-Amoxiclavs Manufacturing Facility in Baba Dogo
- ◆ Factory Development in Kyaggwe, Mukono District, Uganda



**CANON  
ALUMINIUM  
FABRICATORS LTD**

**Canon Aluminium Fabricators is a leading manufacturer of glass and aluminium products in Kenya. We offer a wide range of products, including windows, doors, facades, and more. Our products are known for their high quality, durability, and style.**

**We are committed to providing our customers with the best possible service. Our team of experienced professionals is always happy to help you choose the right products for your needs and budget. We also offer a wide range of installation and after-sales services.**



**WE ARE PROUD  
TO BE  
ASSOCIATED  
WITH  
TOWER COST  
CONSULTANTS  
LIMITED**

Canon Aluminium Fabricators Building, Along Mombasa Road, Nairobi Kenya

P.O Box 30781- 00100 Nairobi, Kenya Tel ; 254 020 826292/3 or +254 020 3517839/42  
Cell ; 254 724 255723 or 0733 411208

Email; [projects@canonaluminium.com](mailto:projects@canonaluminium.com)/ [info@canonaluminium.com](mailto:info@canonaluminium.com)



## RELCON POWER SYSTEMS LIMITED

Electrical Engineers & Contractors

### Our products

- ◆ Generators
- ◆ UPS systems
- ◆ Solar power systems
- ◆ Batteries
- ◆ Inverters
- ◆ Power cables and accessories



### Services

- ◆ Power system design and installation
- ◆ Maintenance and repair services
- ◆ Load shedding solutions
- ◆ Power consulting services



## WE ARE PROUD TO BE ASSOCIATED WITH

### TOWER COST CONSULTANTS LTD

#### Nairobi Office:

Off Kolobot Rd, opp. Mr Wok Restaurant

PO Box 38744-00600, Nairobi.

Tel 0775 813965, 0703 647573

Fax: 020-3744369

#### Mombasa Office:

Machakos Road,

P.O. Box 99205-80107, Mombasa

Tel: 041-2229298/9,

Fax: 041-2229317

Email: [maresh@relconpowersystems.com](mailto:maresh@relconpowersystems.com), [maresh@relvish.com](mailto:maresh@relvish.com), [info@relconpowersystems.com](mailto:info@relconpowersystems.com)

Website: [www.relconpowersystems.com](http://www.relconpowersystems.com)



## Alloy Steel Castings Ltd:

A Partner for African Manufacturers

**Our Mission** at Alloy Steel Castings (ASC) is to Partner with Manufacturers in Africa to become globally competitive by providing reliable mechanical spares and service.

This means working closely with our customers to understand their needs and develop custom-made solutions that meet their specific requirements. We also offer a wide range of standard castings and machined components, which are stocked for immediate delivery.

### Our History

Alloy Steel Castings (ASC) is a steel casting company that is part of East African Foundry Works (EAFW) Group. It comprises a special alloy steel company (ASC) and a Foundry (EAFW). The company was founded in 1972, and since then, we have been on a journey of growth and excellence in serving the manufacturing industry.

**Our vision** is to enable all manufacturers in Africa and beyond to operate efficiently through provision of reliable mechanical spares and services. We achieve the efficiency through recycling of metal which not only saves the environment but also saves our customers on time it would take to source internationally.

Local sourcing of products not only supports the economy, but also provides employment opportunities for our local talents.

### What We Do

We are a steel casting company with our operations ranging from pattern making, melting, molding, machining, heat treatment, and fabrication.

We are an ISO certified company operating under ISO:9001:2015. Our products are manufactured to International Standards such as ASTM/BS/JIS/DIN/SAPS. Our production process is subjected to high-quality controls, including material tests & verifications, destructive and non-destructive tests, and chemical analysis of our materials and manufactured products.

At Alloy Steel Castings, we are the best at what we do in East Africa and beyond. We pride ourselves in delivering quality custom-made castings for major manufacturing industries such as cement, sugar, mining, quarry, and construction. We specialize in crusher parts; shafts and special bolts; gears; pulleys and wheels; housing and pump parts; sugar mills and white metal bearing liners, just to list a few.

### Our Commitment to Africa

We are committed to supporting the growth and development of African manufacturing. We do this by providing reliable and affordable steel castings and machined components. We offer local sourcing and manufacturing options, and we support our customers with technical expertise and advice.

### Why Choose ASC?

There are many reasons why manufacturers choose ASC as their partners for steel castings and fabrication:

1. Proven Track Record: We have a proven track record of delivering high-quality products and

services. Our decades of experience speak volumes about our commitment to excellence.

2. **Customer-Centric Approach:** We are committed to meeting the specific needs of our customers. We work closely with you to understand your unique requirements and provide tailored solutions.
3. **Competitive Pricing:** We offer competitive pricing without compromising on quality. We understand the importance of cost-effectiveness in manufacturing.
4. **ISO Certification:** We are ISO certified and adhere to the highest quality standards. Our commitment to quality is unwavering.

Some specific examples of how we have helped African manufacturers become more globally competitive include:

1. A cement manufacturer in Kenya was struggling to find reliable suppliers of crusher parts. They turned to ASC, who were able to develop custom-made crusher parts that met their specific requirements. This has helped the cement manufacturer improve their production efficiency and reduce costs.
2. A sugar manufacturer in Tanzania was facing problems with their sugar mills. They found that the bearings in their mills were wearing out prematurely. ASC was able to provide them with white metal bearing liners that are much more durable than the standard bearings. This has helped the sugar manufacturer reduce downtime and improve their production efficiency.
3. A textile manufacturer in Rwanda was struggling to find reliable suppliers of replacement parts for their machinery. ASC was able to develop custom-made replacement parts that met the specific requirements of the manufacturer. This has helped the textile manufacturer to reduce their downtime and improve their production efficiency.

These are just a few examples of how ASC is helping African manufacturers become more globally competitive. We are committed to providing our customers with the highest quality products and services, and we are always looking for new ways to help them succeed.

### Contact Us Today

If you are a manufacturer in Africa and are looking for a partner for steel castings and fabrication, please contact ASC today. We would be happy to discuss your specific needs and develop a custom solution that meets your requirements. Our dedicated team is ready to assist you in your journey towards manufacturing excellence.

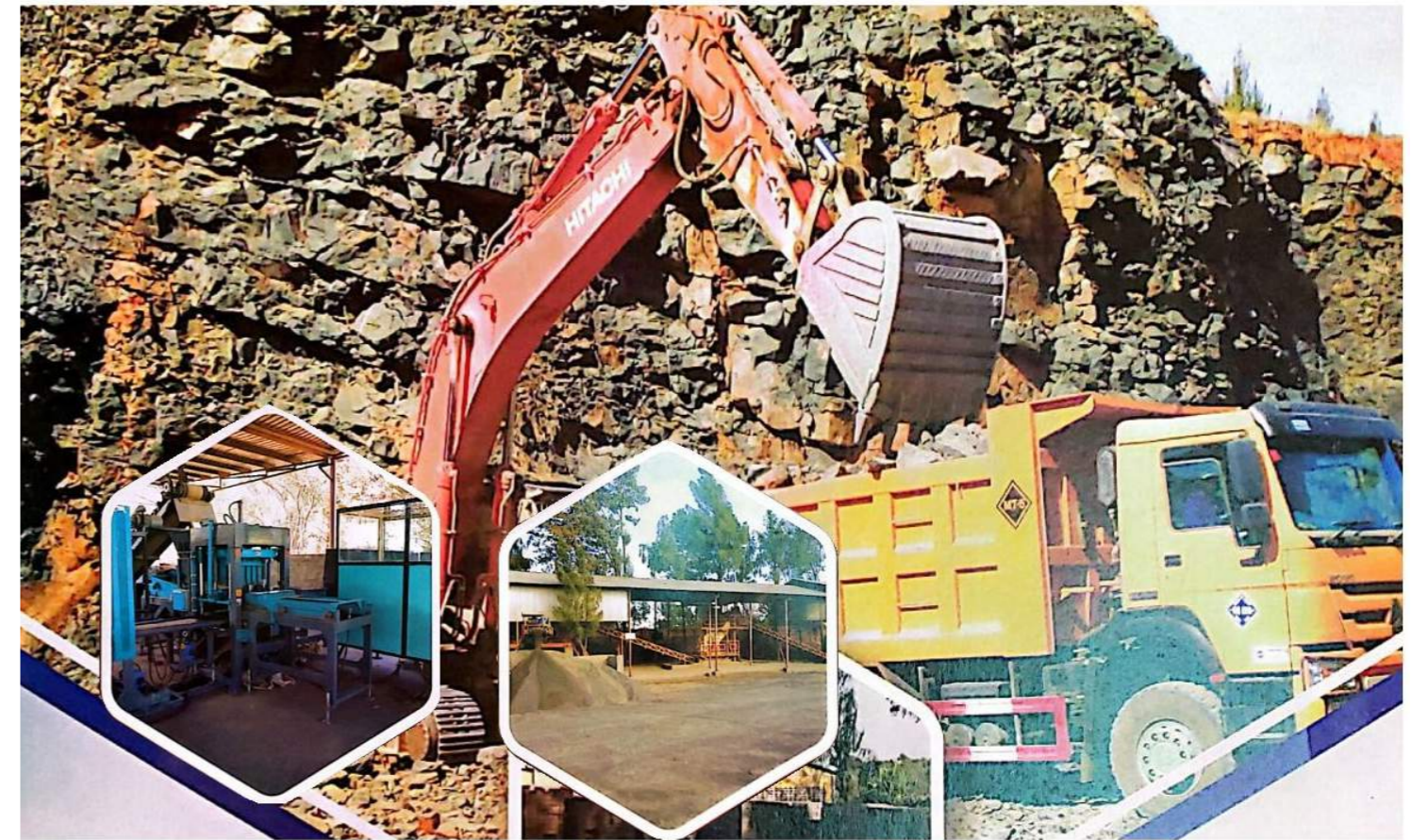
You can reach out to us for products or partnerships on **+254722825439** or our email address [info@alloysteel.com](mailto:info@alloysteel.com)/ [engineering@alloysteel.com](mailto:engineering@alloysteel.com). **We will be looking forward to serving you and giving you value for your money and the best quality steel castings. No casting is too much for us, we are always up for the challenge.**



# Sirikwa

Quarry Limited

Your Trusted Partner in  
Quality Aggregates



**WE ARE PROUD TO BE ASSOCIATED WITH  
ALLOY STEEL CASTINGS LTD and E.A.FOUNDRY WORKS LTD.**

### About us

Nestled in the heart of Eldoret, Kenya, Sirikwa Quarry Ltd stands as a beacon of excellence in the aggregate industry. With a steadfast commitment to quality and reliability, we have been proudly serving the construction and infrastructure needs of our community for decades.

### Dedicated to Sustainability

We recognize the importance of responsible quarrying. Sirikwa Quarry Ltd is dedicated to minimizing our environmental footprint by adopting sustainable practices. From efficient resource management to reclamation efforts, we take pride in being stewards of the land we operate on.

### Comprehensive Product Range

Whether you're embarking on a large-scale construction project or a residential development, Sirikwa Quarry Ltd has the right aggregates for you. From crushed stone to sand and gravel, our diverse product range caters to the unique requirements of every project.

### Contact Us Today

Experience the Sirikwa Quarry Ltd difference. For inquiries, quotes, or to learn more about our products and services, contact us at **0532031693, :0733 778 500, 0722 684344**

Email: [sirikwaeld@gmail.com](mailto:sirikwaeld@gmail.com)

**Build with confidence – build with Sirikwa Quarry Ltd.**

Shreejibapa  
**TEAM  
KABURU**

Jay Shree Swaminarayan

**WE CONGRATULATE ALLOY STEEL CASTINGS  
LTD IN MARKING THEIR OVER 50 YEARS  
OF EXISTENCE IN EAST AFRICA.**

**WE ARE VERY PROUD TO BE ASSOCIATED WITH THEM.**

Swamibapa  
**RK**  
**SANGHANI'S**



## 01. TRANSPORT OUR SERVICES

- Long distance haulage
- Bulk haulage
- Specialized haulage (heavy and wide Load)
- Vessel discharging of cargo
- Suppliers of quarry product
- Mass excavation and back filling
- Demolition

## 02. QUARRY

As we mark our third year in the industry, Quarry stands as a testament to unwavering commitment and exceptional quality in aggregate production. Situated in Mlolongo - Katani, our quarry specializes in the extraction and processing of various aggregates, meeting the diverse needs of construction projects across the region.

Product Range:

1. Ballast 6-10mm
2. Ballast 5-20mm
3. Ballast 10-14mm
4. Ballast 14-20mm
5. Ballast 10-20mm
6. Ballast 3/4-1/2
7. Ballast 20-28mm
8. Crusher Run 0-30mm
9. Washed Plaster sand 0-2mm
10. Stone Dust 0-3mm
11. Washed Rock sand 0-4mm
12. Dust 0-6mm
13. Dust 0-10mm

Available in both single and double crush other sizes not included can be produced on request.

At Quarry, we prioritize customer satisfaction. Our dedicated team is committed to understanding and meeting the unique requirements of each project. With prompt delivery and a customer-centric approach, we aim to build lasting relationships based on trust and reliability.

As we celebrate our third anniversary, Quarry remains steadfast in its mission to be a leading provider of high-quality aggregates. We express gratitude to our clients, partners, and the community for their support, and we look forward to many more years of contributing to the success of construction projects through excellence in aggregate production.



+254 731 339 140

info@kaburu.co.ke

Aoko Rd. Nairobi



# NJOWAMBU (K) LTD

NJOWAMBU (K) LTD takes pride in being a leading business in the automotive industry. Our core focus is centered around providing a wide range of services to cater to every aspect of your vehicle requirements. Whether you're seeking maintenance services, parts, or expert advice, we are committed to delivering top-notch solutions tailored to your satisfaction.

**WE ARE PROUD TO BE ASSOCIATED WITH**



Contact NJOWAMBU (K) LTD

Munene Industries, Muindi Mbingu Road | 0726608529 | 0708602339

info@njowambu.co.ke

[www.njowambu.co.ke](http://www.njowambu.co.ke)

# BEGLINWOODS ARCHITECTS

WWW.BEGLINWOODS.COM

**32 YEARS. 1991-2023**

Both Simon Woods and David Beglin had worked as Architects in Kenya for 15 years before the formation of Beglin Woods in 1992.

"Within a week of forming the practice, we were awarded the refurbishment and extensions of both the Mayfair Hotel Nairobi and Hemingways Hotel Watamu. These Projects led us into work for Hospitality clients and the Projects included:"

- Flame Tree Restaurant at the Panafric
- Samburu Intrepids Lodge
- Mara Simba Lodge
- Buffalo Springs Lodge
- Tortilis Camp in Ambosli
- Hemingways Watamu



Work on these projects sought to develop a strong design and construction language for Hotels and Lodges in Kenya and allowed us to explore and use techniques to develop the use of local crafts, and building methods of sustainability, including energy reduction and waste recycling. We are still working on Hotels and Lodges, having most recently completed.

- Crowne Plaza Hotel, JKIA
- Dusit Princess, Westlands
- Sankara, Westlands
- Avani Hotel at Capital M Westlands.



From 2000 onwards, we undertook a series of Residential Projects. These projects included Rosslyn Ridge Housing Developments for the US Government, Miotoni Woods and Miotoni West Road Karen for First Assurance, Lower Kabete Mews for Cannon Assurance, Marula Gardens, Karen, Lone Tree Estate Rosslyn.....and many others.



## NOVA APARTMENTS



These projects continued established forms of traditional, domestic design which had been common in Kenya for many years and which featured the use of pitched tiled roofs, dormer windows, stone walls, steel windows, hardwood floors and large landscaped gardens. These projects were highly profitable investments for both developers and current owners and are still highly sought-after residential locations.



In recent years, there has been a move away from this style of building design towards a more modern streamlined aesthetic. The new Projects include: Housing at Chalbi Drive, Applecross Road, Miotoni Road and Loresho. There has also been a big increase in high rise high density Residential Development in the form of Apartments for sale or rent as service apartments.

This corresponds to an increase in the middle-class and more affluent population. These developments must be built at an extremely high density to justify the extremely high cost of urban land which now exceeds 3 million dollars an acre over most of Nairobi's high end residential areas.

These developments now offer a complete on-site community with entertainment, retail and social facilities including cinemas, gyms, restaurants, shops, spas and pools. They offer good profit returns to developers.

These high end Apartments offer alternative and attractive Residential options to city dwellers seeking comfort and security in urban locations. We have recently completed Nova apartments on Waiyaki Way (sold out), Dusit Princess in Westlands, and Capital M Apartments on Muthithi Road (now converted to Dusit and Avani Hotels).

### SCANAD OFFICES



Office buildings fall into several categories. Offices for sale or rental by developers and offices for their own use by Corporations. Office accommodation now requires social facilities, informal meeting areas, daycare centers, recreational areas, shops, restaurants, medical facilities, and transport back up areas. Our recently completed building at UNON, Gigiri is fully supplied with PV generated electricity. Our office designs at Watermark, Karen and AWF Karen now recycle all waste for irrigation.

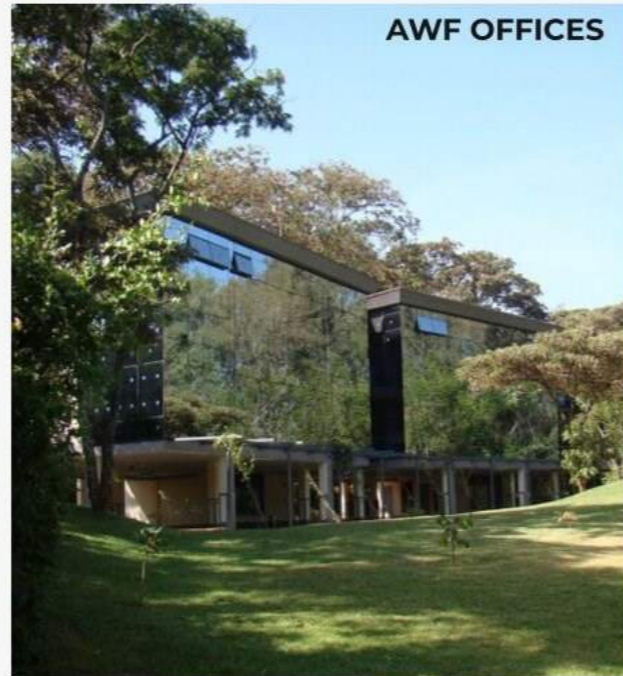


### UNON OFFICE COMPLEX



### WATERMARK OFFICES

### AWF OFFICES



### ICEA LION



### RIVERSIDE SANCTUARY



### NATION PRINTING PRESS

Industrial buildings also give us an opportunity to develop alternative solar energy systems on the large roofs, together with wastewater recycling and disposal systems.

Since we started Beglin Woods in 1992, we have been fortunate to be asked by generations of clients to assist with their building development projects. This has given us the opportunity to work with the country's premier consultants, contractors, subcontractors, and suppliers.

Through computers and more recently through internet and social media, we have seen our business and associated industries grow into a true global marketplace where virtually anything can come from anywhere in an instant. This has increased quality and economy greatly and many of the small businesses we worked with 30 years ago, have now grown into major international players.



### AVOCADO OIL FACTORY



### BIDCO NAKURU



### USIU SCHOOL OF HUMANITIES & SOCIAL STUDIES

We have completed 2 press hall buildings for Nation Newspapers in Mavoko, a Feed mill building for Bidco Nakuru and are working on an Avocado Oil processing building in Athi EPZ.

Industrial Buildings frequently have relatively simple structures but have sophisticated and complex plant installations often supplied by overseas specialists.

We are completing the School of Humanities building, our 8th Project at USIU. The Library Building, completed in 2005 is still the Hub of the USIU complex.



### USIU LIBRARY





**PRIVATE RESIDENCE, KAREN**

Private houses are all the time becoming more sophisticated and frequently involve state of the art security, home automation, cinemas, pools, gymnasiums, barbeques, and guest accommodation. We have several such houses, built and under construction in Nairobi and in towns outside Nairobi.

Individual residences are now being commissioned more frequently by high earning individuals, who have land in the inner suburbs. Houses also take a long time to construct and do not offer contractors an attractive profit margin. For this reason, we need to come to design decisions quickly, and must select contractors and subcontractors carefully.



**PRIVATE HOUSE**



**RIVERSIDE MEWS**



**PRIVATE HOUSE**



**PRIVATE DEVELOPMENT, KAREN**



**ICEA LION**



**KAREN PRIVATE RESIDENCE**



**CAPITAL M, WESTLANDS**

Our clients and ourselves are influenced on a daily basis by innovation in design and building components. Computer software now assists in making building shapes and configurations that were unthinkable even 20 years ago. We grow with the evolution of the profession and the market.

We gratefully applaud and congratulate every individual, firm and contractor who has kindly assisted us on our privileged journey. We look forward to many more and better projects with everybody in future years.

Asanteni from David Beglin, Simon Woods, Katherine Mung'au, Kunal Patel, Kimani Muchene, Benson Odoyo, Xan Woods, Aaron Ogutu, William Shisia, Maurice Ogutu, Justus Gichuhi, Samson Thiong'o, Phyllis, Samwell Mburu and all at Beglin Woods Architects.



**NOVA APARTMENTS**



**NOVA APARTMENTS, WESTLANDS**



**APARTMENTS FOR US EMBASSY**



**MATUMBATU ROAD DEVELOPMENT**



**Gamma Delta Eastern Africa Ltd,**  
 P. O. Box 28088 (00200),  
 Nairobi, Kenya.  
 Mashiara Park, Kaptagat Road, Loresho.  
**Cellphone:** +254 728 606 578 | 0722 521 766 | 0728 606 578

www.gammadelta.co.ke

## Electrical & Mechanical Engineers

Powering Progress, Illuminating Futures

Established in 1980, Gamma Delta has evolved into a powerhouse in the East African energy sector. Our roots trace back to managing local representation for Sprecher + Schuh (now part of Areva), and today, we proudly represent several international manufacturing companies in Medium and High Voltage Electrical Switchgear, Transformers, Transmission Lines, and more.



We provide an extensive array of services, covering various sectors such as:

◆ **Building Services**

Gamma Delta's legacy extends beyond power—our expert engineers and designers have crafted iconic buildings and offices. Recent projects include Butterfly Serviced Suites & Villas, Jaramogi Oginga Odinga Museum, and more. We prioritize customer satisfaction, offering effective engineering solutions with accuracy, reliability, and cost-effectiveness.

◆ **Trading Services**

From generators to power transformers, we facilitate product supply, technical consultancy, and turnkey project implementation. Our partnerships with key entities like Kenya Power, KENGEN, ERC, REA, and KETRACO demonstrate our pivotal role in the energy landscape.

◆ **Renewable Energy**

Collaborating with partners, we develop, build, and operate utility-scale energy projects throughout Eastern Africa. Our committed team ensures sustainable solutions, including onsite power generation, distribution feeders installation, lighting design, and alarm systems.



**WE ARE PROUD TO BE ASSOCIATED WITH  
 BEGLINWOODS ARCHITECTS LTD.**



## HAROLD R. FENWICK & ASSOCIATES LTD

Chartered Quantity Surveyors

Since its inception in 1972, Harold R. Fenwick & Associates Ltd, has worked across the full spectrum of construction projects. Our clients span the commercial, residential, educational, industrial and tourism sectors and have benefited from the various services we provide. We pride ourselves on the personal touch we offer.

**WE ARE PROUD TO BE  
 ASSOCIATED WITH  
 BEGLINWOODS ARCHITECTS LTD.**

### OUR SERVICES

01. Construction Cost Planning
02. Quantity Surveying
03. Project Management



Nairobi Office  
 Telephone Numbers;  
 Mobile: +254 (0) 715 555 412 /  
 Mobile: +254 (0) 722 204 591  
 Email: fenwick@fenwick.co.ke  
 haroldfenwick@gmail.com

Mombasa Office  
 Tel: +254 (0) 41 2318722  
 Mobile: +254 (0) 733 377190  
 Email: mombasa@fenwick.co.ke

www.fenwick.co.ke



***Our Services Include:***

- Civil and Structural Engineering Designs
- Engineering Assessment & Reports
- Drafting services
- Construction Supervision

We congratulate Beglin Woods Architects Ltd. on their 32nd Anniversary.  
We are proud to be associated with you and we look forward to many more years  
of Prosperity and Partnership.

The Navigator, Kindaruma Road, Off Ngong Rd, 3rd Floor,  
P.O. Box 17085-00100 Nairobi. Tel: (+254) 775 875347  
Email: [info@abbaconsult.co.ke](mailto:info@abbaconsult.co.ke)



# Built Sync Consult

Consulting Quantity Surveyors & Project Managers

**Built Sync Consult**, your go-to solution for unparalleled expertise and cutting-edge innovation! We're not just a company; we're a powerhouse of experience, proudly owned and led by directors with a combined 15+ years of industry mastery.

**WE ARE PROUD TO BE ASSOCIATED WITH BEGLINWOODS ARCHITECTS LTD.**

## Vision

To be the preferred provider of Quantity Surveying and Project Management services for the construction industry in Kenya, serving our client with passion of the profession.

## Mission

To provide the highest quality of Quantity Surveying and Project Management services that ensures optimal investment returns to our clients and working for the benefit of our clients.



## Contact Us

Vision Plaza, Third Floor Office 5, Mombasa Road,  
P.O Box 104226 – 00101 NAIROBI,

Tel: [0724 470 826](tel:0724470826), E-mail: [builtsync@gmail.com](mailto:builtsync@gmail.com) /  
[info@builtsyncconsult.co.ke](mailto:info@builtsyncconsult.co.ke)

Website: [www.builtsyncconsult.co.ke](http://www.builtsyncconsult.co.ke)



## Electrical & Mechanical engineers

DesignMatic Ltd, your premier destination for cutting-edge design solutions! Established in April 2015, we specialize in providing top-notch Design Consultancy services for Mechanical, Electrical, and Public Health Engineering Systems tailored for the Built Environment. At DesignMatic Ltd, we leverage state-of-the-art engineering design software packages to guarantee efficiency in our design processes and strict adherence to local and international engineering standards. Our commitment to integrity, efficiency, and quality sets us apart, ensuring that your projects are not only visually stunning but also functionally impeccable.

WE ARE PROUD TO BE ASSOCIATED WITH  
BEGLINWOODS ARCHITECTS LTD.



### CONTACT US TODAY

Tel: 0786 571 495  
0728 833 188

Email: [miheer@design-matic.com](mailto:miheer@design-matic.com)  
[admin@design-matic.com](mailto:admin@design-matic.com)

## Conveyor & Industrial Supplies (PTY) LTD

Reg. No. 1982/011524/07

Tel: +27 11 306 3118  
713 van Dyk Street, Boksburg East  
[info@cisjhb.co.za](mailto:info@cisjhb.co.za) • [www.cisjhb.co.za](http://www.cisjhb.co.za)

**Level 2 BEE Compliant**

**33 YEARS OF SERVICE**  
MANUFACTURING HIGH QUALITY CONVEYOR MECHANICALS SINCE 1982 FOR ALL MINING AND INDUSTRIAL SECTORS.

**GEARBOXES**  
Manufacturing & Repairs

**CONVEYOR IDLERS AND FRAMES**

**CONVEYOR PULLEYS**  
Manufacturing & Repairs

**CONVEYOR BELTING**

Tel: +27 (0)16 986 0030  
Fax: +27 (0)16 986 0127  
e-mail: [rfq@turnmill.co.za](mailto:rfq@turnmill.co.za)

**[www.turnmill.co.za](http://www.turnmill.co.za)**

12 Fairbank Street NW7  
Vanderbijlpark, 1911  
PO Box 2092, Vereeniging, 1930

**TURNMILL**  
PROQUIP ENGINEERING (PTY) LTD

Fabrication and reconditioning specialists

Turnmill is a level 1 BBBEE contributor

- Pressure Vessels: Columns, Shell & Tube Heat, Exchangers and Drums
- Shop Fabricated Tanks
- Rotary Kilns and Processed Fired Equipment
- Materials Handling and Structural Components
- Rotable Unit Repairs and Refurbishment
- Mill Components and Spares
- CNC Turning
- Large 5 Axis CNC Milling (manually adjusted 6th Axis)

Turnmill is an ISO 9001:2015 and an ISO 3834 Part 2 Certified Company

Part of the STRUCTA GROUP of Companies

37

GREEN RUNS IN OUR FIBRES

High performance product properties

# Lasting Strength with fibre cement

▶ Everite Building Products has over the years established a reputation for producing a variety of outstanding quality products which have been used in a wide range of external and internal applications.

Nutec is the registered name for products manufactured without asbestos as a raw material. Nutec fibre cement products are manufactured using a mixture of cellulose fibre, cement, silica and water.

Everite is renowned for its comprehensive range of Nutec Roofing and Cladding Solutions and includes fibre-cement roofing, cladding, ceilings and building columns amongst others.

Nutec fibre-cement high performance properties and added benefits include: the use of safe renewable fibres; considerable tensile strength with enhanced dynamic load bearing properties; excellent thermal properties; water-and wind resistance; hail resistance; fire resistance and resistance to fungus, rodents and acid.



▶ Everite Building Products, is an appointed licensee by the Xella Group to manufacturer Hebel Autoclaved Aerated Concrete (AAC). Everite Building Products is the only manufacturer of AAC in Africa.

AAC as a building material has gained a considerable share of the international construction market since its inception in 1923 in Sweden and today maintains its reputation of the building material of the future. It is viewed as a revolutionary material that offers a unique combination of strength, light-weight, thermal insulation, sound absorption, unsurpassed fire resistance and unprecedented ease of construction.

Since commissioning the AAC plant in 2017, Everite Building Products has enjoyed considerable success in specification of the product to landmark projects in South Africa.



# Tips on Upgrading a New House Plan

Whether you want a chef-inspired kitchen or a relaxing master bath, you can search through thousands of plan options to give yourself the upgrade you deserve when you build. Plus, we offer information on some of our favorite products for every space. Check them out for yourself! Before you start planning for your finishes, though, here are a few of the major spaces and top features that homeowners tend to splurge on when selecting a house.

Finding an awesome house plan is great, but upgrading your house plan to your exact idea of perfection is even better! Choosing every finishing detail and all of your favorite features really makes a house your own. Just think about all the fun you can have selecting finishes to complement your dream home.

## Upgrading the Kitchen

The kitchen makes a statement both in functionality and style. Whether you want a country kitchen in a chic farmhouse or a sleek modern layout in a contemporary home, our house plans offer all the possibilities. The key is to find fixtures and features that match your home's style while also providing uniquely amazing components.



Some of our favorite areas to explore while upgrading your kitchen center around the cooking

spaces. An impressive gas cooking range and a modern oven are some relatively simple ways to add value to your house. Many homeowners also love the look of refined finishes like quartz countertops and beautiful cabinetry.

Perhaps the most fun part of designing a kitchen is getting to choose your new perfect fridge. Whether it's built to blend into the cabinets, or it's a smart fridge that hooks up to your phone, explore some of the best refrigerators made by some of the most reputable companies!

Kitchens have a variety of great features to choose from. Don't let anything go unnoticed and ensure that your new kitchen stands out for the right reasons!

## A Spa Bath Like No Other

Everybody could use a spa bath. The idea of upgrading your house plan doesn't get much more tempting than when you think about a spectacularly relaxing oasis. Just imagine unwinding in a jacuzzi tub after a long day at work or with the kids. Or letting the stress melt away under a warm waterfall shower. Adding high-end finishes to the vanities can also greatly increase a home's value!



## Windows Galore

One easy way to create curb appeal is by choosing the right windows for your home. For a Craftsman plan, you may want to consider windows with



www.everite.co.za Info : 0861 333 835

divided lights for detail, while a modern plan would be better finished with large, sleek panes. Always purchase from a reputable company to ensure that the style is durable and your home is protected.

**Doors**

Both your front door and garage doors contribute to curb appeal. Picking a unique but fitting door for your home's style will give you great property value in return. There are so many gorgeous ways to at a custom touch with your doors!

**Other Little Things That Go a Long Way**

There are so many ways to upgrade your house that we couldn't possibly list them all here. From crown molding and tray ceilings, to built-ins and centerpiece fireplaces, to even an outdoor kitchen or entertainment space... use your imagination! We know that you will love making every inch of your home custom and enjoyable.

Your home is a unique expression of you!



**HARVEY TileEco**®  
A DIVISION OF MACSTEEL

# The green roof tile

Welcome to the future of roofing – a technological breakthrough from Harvey Roofing Products: the Harvey EcoTile®.

Harvey EcoTile® is a mineral composite roof tile. By utilising 98% waste material, Harvey EcoTile® is 100% recyclable yet provides superior functional benefits to other roofing options.

Harvey EcoTile's® technological design advantage ensures an interlocking, lightweight tile that is low on maintenance, weatherproof and virtually unbreakable in normal use.

Your building's roof is one of its most important elements in function, aesthetics, surface area and investment. Increase its functional performance and green credentials with one innovative product – Harvey EcoTile®.



- Lightweight
- Low Maintenance
- Durable
- Weatherproof
- Attractive
- Easy to Install
- Paintable
- SANS 10400-T
- Waste Material
- 100% Recyclable
- Waterless
- Community Projects



Tel: +27 11 741 5600 [www.harveyroofingproducts.co.za](http://www.harveyroofingproducts.co.za)

# S&P SYLDON & PARTNERS

P.O. Box 664 00606 Sarit Centre,  
Nairobi, Kenya.  
Tel: +254 02044 51 422/44 53 089  
Telefax :44 51 423  
Mobile: +254 722 861 473 / +254 733 850 848  
Wireless: +254020528 77 29  
Email: info@sandpconsult.co.ke, sylدون@sandpconsult.co.ke

## S&P Departments:

SyldonInfra



SyldonServ



SyldonPower



SyldonTel



SyldonEnv



Syldon and Partners is a wholly Kenya owned limited liability firm established in May, 2000 in Kenya to undertake consultancy services in design, installation and maintenance of Electrical, Mechanical Services and Management Information Systems (MIS), Civil and Structural works.

There are two directors, Eng. G.N. Olando – Managing Director in charge of all Electrical Services and general management of the firm. Eng. Calleb Olali is Director in-charge of mechanical services. Other core staff members include Assistant Electrical Engineer John Ruddy Munda and Assistant Mechanical Engineer Felix Ollando.

Eng. H.S Roopra, Eng. Peter Chege are associates of the firm and backstops Eng. Olando and Eng. Olali in all electrical and mechanical assignments respectively. Eng. Victor Ongewa and Eng. Cyrus Njungu are associates in-charge of power sub-stations and transmission/distribution lines respectively.

Office Upper Hill Road,  
Upper Hill, Near Citi Bank  
Opposite Church of Jesus Christ Of Later Day  
Saints, Mount Meru Court, Suite No. 4.

