

BUILDERS MAGAZINE

AUGUST - SEPTEMBER 2024



Kenya's Bold Transformative Mega Projects



GREEN RUNS IN OUR FIBRES

High performance product properties

Lasting Strength with fibre cement

▶ Everite Building Products has over the years established a reputation for producing a variety of outstanding quality products which have been used in a wide range of external and internal applications.

Nutec is the registered name for products manufactured without asbestos as a raw material. Nutec fibre cement product are manufactured using a mixture of cellulose fibre, cement, silica and water.

Everite is renowned for its comprehensive range of Nutec Roofing and Cladding Solutions and includes fibre-cement roofing, cladding, ceilings and building columns amongst others.

Nutec fibre-cement high performance properties and added benefits include: the use of safe renewable fibres; considerable tensile strength with enhanced dynamic load bearing properties; excellent thermal properties; water-and wind resistance; hail resistance; fire resistance and resistance to fungus, rodents and acid.



▶ Everite Building Products, is an appointed licensee by the Xella Group to manufacturer Hebel Autoclaved Aerated Concrete (AAC). Everite Building Products is the only manufacturer of AAC in Africa.

AAC as a building material has gained a considerable share of the international construction market since its inception in 1923 in Sweden and today maintains its reputation of the building material of the future. It is viewed as a revolutionary material that offers a unique combination of strength, light-weight, thermal insulation, sound absorption, unsurpassed fire resistance and unprecedented ease of construction.

Since commissioning the AAC plant in 2017, Everite Building Products has enjoyed considerable success in specification of the product to landmark projects in South Africa.



www.everite.co.za Info : 0861 333 835

Kenya's Bold Leap

Committing Sh995 Billion to Transformative Mega

Kenya is gearing up for a monumental venture with the initiation of a Sh995 billion project aimed at constructing 56 dams nationwide. This ambitious undertaking, fueled by a Public-Private Partnership (PPP) model, seeks to tackle water scarcity challenges head-on while simultaneously invigorating key sectors such as



The government's recent announcement outlines a financing strategy that combines public and private investments. Although the specifics of the PPP model are still in the works, private companies are expected to play a pivotal role in funding,

Publisher:

BARAKA PUBLISHERS t/a BUILDERS MAGAZINE

KENYA OFFICE

Tel: 0794513375 P.O Box 214-20116 Gilgil

Email: info@buildersmagazine.co.ke Website: www.buildersmagazine.co.ke

Contributions

The editors welcome news items, press releases, articles and photographs relating to the Construction Industry. These will be considered and, if accepted, published. No responsibility will be accepted should contributions be lost, damaged or incorrectly printed.

© All rights reserved

Anticipated Benefits

Enhanced Water Security: The construction of 56 dams is poised to significantly augment water storage capacity, thereby enhancing water security for domestic and agricultural use. This is especially crucial in mitigating water scarcity issues in areas prone to drought, ensuring a dependable water supply for irrigation and bolstering agricultural productivity.



Improved Regional Development: The scale of this project translates to a substantial creation of job opportunities during both construction and operation phases. This, in turn, is expected to stimulate economic growth in various regions across the country. Enhanced water access can further unlock agricultural potential, contributing to the overall economic development of these regions.

Anticipated Benefits

Enhanced Water Security: The construction of 56 dams is poised to significantly augment water storage capacity, thereby enhancing water security for domestic and agricultural use. This is especially crucial in mitigating water scarcity issues in areas prone to drought, ensuring a dependable water supply for irrigation and bolstering agricultural productivity.

Boost to Energy Generation: Beyond their role in water storage, the dams have the potential to generate hydroelectric power. This move could diversify Kenya's energy mix, diminish dependence on fossil fuels, and promote cleaner energy sources, aligning with global sustainability goals.



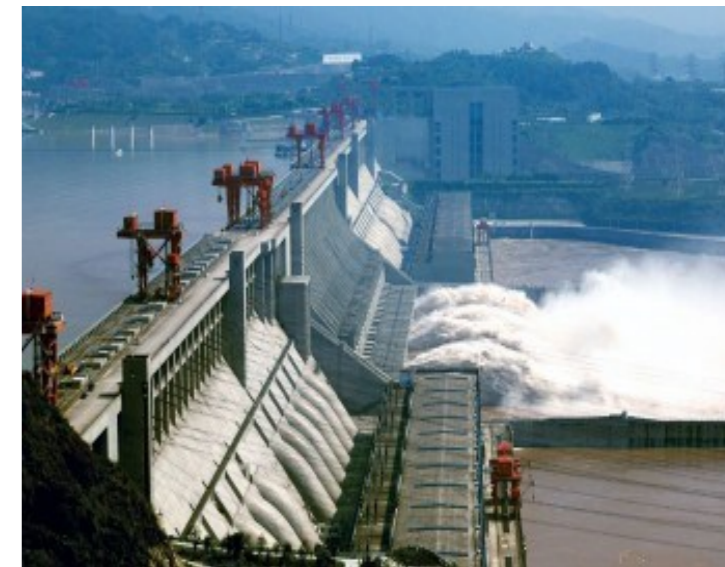
Potential Challenges

Ensuring Transparency and Accountability: The success of the PPP model rests on maintaining transparency and accountability throughout the project's lifecycle. Establishing clear guidelines and robust monitoring mechanisms is imperative to prevent potential mismanagement and guarantee the project delivers its intended benefits.

Environmental Considerations: The construction of dams carries environmental implications. Thorough environmental impact assessments and effective mitigation measures are essential to minimize any adverse consequences and ensure the project aligns with sustainable development practices.

Community Engagement: Inclusive stakeholder engagement, particularly involving local communities, is vital. Addressing concerns, ensuring the equitable distribution of benefits, and fostering community support are crucial elements for the project's success.

The Sh995 billion mega dams project underscores Kenya's dedication to confronting water scarcity challenges and promoting sustainable development. As the project progresses, navigating potential obstacles and ensuring responsible implementation will be key. If executed successfully, this initiative has the potential to revolutionize Kenya's water landscape, propel economic growth, and usher in a more water-secure future for its citizens.



sustainable & long term
WATER STORAGE SOLUTIONS
 Pressed Steel Sectional Water Tanks

Prestank tank capacities range from **1 500 litres to 4.2 million litres** designed to SANS 10329:2004 guidelines and SANS structural codes. Our **Hot Dipped Galvanising** units are **easily transported** and **assembled** on even the most remote sites.



Specialists in the manufacturing of domestic and industrial water storage.

Structa Technology is a Level 1 BBBEE Contributor, and is part of the STRUCTA GROUP of Companies



MEYERTON | Tel: 016 362 9100

water tanks1@structatech.co.za | Director: Rodney Cory

rodney@structatech.co.za | 082 575 2275 | www.prestank.co.za



Manufactured in SOUTH AFRICA

DMJ Architects: Shaping Skylines, Crafting Legacies

Innovative Design, Enduring Legacy



Established in 1965 by visionaries Robert Marshall and Freddy Wilkinson, DMJ Architects has evolved into a distinguished architectural firm known for its diverse and impactful projects across East Africa and beyond. With a commitment to elegant, sound, and cost-effective design, DMJ Architects has left an indelible mark on the region's urban landscape, contributing to the growth and development of cities and communities.

From iconic lodges and hotels to commercial complexes and educational institutions, DMJ Architects has demonstrated its versatility and prowess in architectural design. Notable projects such as Voi and Lobo lodges, Jogoo House, The Panafric Hotel, and the Louis Leakey Memorial Centre showcase the firm's ability to seamlessly blend functionality with aesthetics.

Under the leadership of Kevin Craig – McFeely, the firm expanded its reach, undertaking planning projects such as Selebe Phikwe & Broadhurst in Botswana, St. Benedicts Monastery, and the Prime Minister's office in Dodoma. The collaboration with Dalgliesh Lindsay Group and later associations with Carnell Green Partnership and Klein & Louw have further solidified DMJ's international standing.



Airtec Systems Limited

We can offer comments/advice on how your building can affect the type of air conditioning system proposed.



COURT OF APPEAL HQ AND ABUJA DIVISION, ABUJA

CHILLER AND INSTALLATION AT THE NIGERIA JUDICIAL COUNCIL HQ, ABUJA



PRIMARY PUMP INSTALLATION AT NIGERIA JUDICIAL COUNCIL

HVAC INSTALLATION AT MTN KANO



INSTALLATION OF 100% FRESH AIR UNITS AT MTN KANO AND ISADAN

INSTALLATION OF AIR HANDLING UNIT AT THE METROPOLITAN CLUB, LAGOS

INSTALLATION AT ROSS, CHRISTCHURCH, DARABADA, LAGOS

CANADIAN DEPUTY HIGH COMMISSION, LAGOS

Our Range Of Products

- Chillers
- Air handling units and fan coil units
- Direct expansion packaged units
- Mini split units, Outside air units
- Rooftop package units
- Precision control units

Telephone: +2341-3450559, 7744816, 4708588, 0802 223 8170 Fax: +2341-4963736
 Email: airtec@mwebafrica.com, airtec@hyperia.com Website: www.airtecng.com
 Abuja Address: 22 Djibouti Crescent, Wuse II, Abuja Postal: P.O.Box 5830, Ikeja,





DMJ Architects' success is attributed to its talented team of architects and consultants. Simon Johnson, a partner since 1980, has played a pivotal role in shaping the firm's design philosophy. Per Geheb, the consultant interior designer, brings a unique aesthetic sense to each project. Kavita Mediratta, with a tenure since 2006, oversees the execution of large-scale projects, ensuring precision and excellence.



The firm's recent and ongoing projects from 2010 to 2020 reflect its commitment to innovation and sustainable design. From designing food factories for IPS group in Thika to a 30-storey block in Upper Hill, Nairobi, and the Beacon entertainment/shopping mall, DMJ Architects continues to push the boundaries of architectural creativity.



Collaborating with Sarova Hotels, the firm upgraded the Fire and Life Safety aspects of the Stanley Hotel. Projects like Lazare House, Kintengela International Schools Campus, and Missionary Benedictine Sisters Uzima Clinic underscore the firm's dedication to diverse sectors, including residential, education, and healthcare.



The previous decade saw DMJ Architects involved in key projects like APA/Apollo headquarters, Eden Square office complex, and Buffalo Mall in Naivasha. Master Plans for Strathmore University Mbagathi Campus and Mwalimu Nyerere Memorial University highlight the firm's commitment to shaping educational spaces.

The completion of projects like Bustani Villas, Upper Hill Medical Centre, and offices for Tanzania Revenue Authority showcase the firm's wide-ranging capabilities. The design and completion of Prime Bank's headquarters, Capital Centre shopping mall, and offices in Riverside Drive emphasize DMJ Architects' prowess in commercial architecture.



DMJ Architects has consistently delivered elegant, cost-effective, and climate-sensitive buildings that stand the test of time. The firm's design philosophy has evolved to incorporate European trends and standards while respecting the practicalities of operating in the African context. A commitment to progressive design ensures long-term usability and flexibility, adapting to the changing needs of a dynamic world.





DMJ Architects boasts a dedicated team of 5 qualified Architects, 4 Architectural Assistants, and 7 administrative staff. Drawing on additional expertise from DAG International when needed, the firm is well-equipped with state-of-the-art technology to efficiently deliver its services.

The firm offers a comprehensive range of services, including feasibility studies, master planning, interior design, and contract administration. From initial concept to construction completion, DMJ Architects ensures a seamless and client-focused approach, providing innovative solutions tailored to each project's unique requirements.



As DMJ Architects continues to shape skylines and craft legacies, the firm remains committed to pushing the boundaries of architectural innovation. With a rich history, a visionary team, and a commitment to excellence, DMJ Architects stands as a beacon of architectural prowess in East Africa and beyond, leaving an enduring legacy for generations to come.



CONSULTING | DESIGN | MANAGEMENT

Geomax Consulting Engineers Ltd, established in 1987 and registration No. C. 36119, is a leading MEP engineering consultancy firm in East and Central Africa. The company specializes in the following main areas; **Mechanical & Electrical Engineering, Electronic Engineering, ICT and Specialised Building Consultancy services.**



We are proud to be associated with DMJ Architects in their Norkun Investment Ltd's Galleria Gardens Housing project, Langata, Nairobi.

Geomax Consulting Engineers Ltd's other projects include; **THE AGA KHAN HOSPITAL, KISUMU; MP SHAH HOSPITAL NAIROBI; THE NAIROBI HOSPITAL and THE AFRICAN DATA CENTRE .**

Geomax Consulting Engineers Ltd

The company prides itself in that, the founders are renowned, respected and reputable engineers with over 37 years of experience in the built environment. Our designs are tailored to suit our client's specific needs, while applying optimal proven technology within the allowances of the Client budget. We exercise financial control from the inception of the project to final account stage, with the undertaking to deliver a quality installation on time and within our client budget.

Membership, Affiliation and Accreditation

- Engineer's Board of Kenya.
- Ministry of public works



Over 37 years of engineering excellence!

|| CONTACT US ||

St. Hellen Lane off Langata Road, Karen P.O Box 53748 - 00200 Nairobi - Kenya
Tel: +254 203 873 430 / +254 722 207 236 / +254 739 207 236

www.geomaxke.com

Energy Efficiency & Environmental Conservation - Let's go green.



ORACON ENTERPRISES

Oracon Enterprises Ltd is a Kenyan air conditioning company that specializes in the supply, installation, repair, and maintenance of air conditioning systems. They cater to a wide range of sectors, including residential, commercial, and industrial markets. The company emphasizes quality and reliability in its services, providing innovative and cost-effective solutions tailored to customer needs.

Contact Us

MR BENARD OKETCH

 0725083442

 MOMBASA, KENYA





Universal Engineering Systems Limited

DISTRIBUTORS, DESIGNERS & CONTRACTORS
Air Conditioning, Refrigeration & Mechanical Ventilation Systems
Specialists in IT Cooling (Precision) A/C Systems

We are the authorized suppliers and installers of the most advanced technologies on Close Control Systems (Precision Air Conditioning) specially designed for Data Centers, Telecommunication Switch Rooms, Server Rooms etc. and Building Management System for High Tech Air Conditioning and Ventilation applications.

OUR SERVICES



WE ARE PROUD TO BE ASSOCIATES WITH DMJ ARCHITECTS

Our Brands & Partners



Our Contacts

Dale House, Raphta Road Westlands, P.O. Box 17729-00500, Nairobi Kenya.

TEL: +254 722 513 668 / +254 733 513 668

EMAIL: info@universalengineering.co.ke

<https://universalengineering.co.ke/>



PLUMBING SYSTEMS LTD.

16, GIL GIL INDUSTRIAL PARK, GIL GIL RD, INDUSTRIAL AREA.
+254 730 792 900
INFO@PLUMBINGSYSTEMS.CO.KE

Looking for top-notch plumbing services in Nairobi? Look no further! Plumbing Systems Ltd is here to cater to all your plumbing, drainage, and fire protection needs with professionalism and precision.

SERVICES WE OFFER

1. Industrial Power, Precision Plumbing
2. Supply & Installation of Water Treatment Plants
3. Solar Water Heating Plant Installation
4. Supply & Installation of Waste Water Treatment Plants
5. Plumbing, Drainage & Fire Protection Services

WE ARE PROUD TO BE ASSOCIATED WITH DMJ ARCHITECTS





WE ARE PROUD TO BE ASSOCIATED WITH DMJ ARCHITECTS

Esteel Construction Ltd, established in 1998, is a reputable Building and Civil Engineering Construction Company. We have a proven track record of delivering quality projects, including office parks, apartments, and industrial schemes. Our focus is on providing excellent services and ensuring customer satisfaction. Trust us to engineer your dreams.

Our Contacts

Viwandani Busia Rd, Esteel Construction Bldg

P.O Box 3713-00506, Nairobi, Kenya

☎ 0114 098438/ +254 20 2679822

✉ info@esteelconstruction.com

Office +27(0)11-795-4007
Cell +27(0)83-372-9802
sven@iesciences.com
www.ies3d.co.za
www.initio.co.tz

TOPCON

**WITH GREAT POWER
COMES GREAT VERSATILITY**

Building Construction (BIM)

CIVIL INFRASTRUCTURE
AGGREGATES & MINING
PROCESS, POWER & PLANT

Topcon's new GLS-2000 is equipped with ultra high speed scanning that provides time saving benefits without compromising accuracy. With a scan range of over 350 meters, a full-dome 360° x 270° field-of-view, and a simple one-touch operation, the GLS-2000 is a rugged and versatile tool that enables you to capture accurate 3D data in all your challenging work environments, across all your applications. The GLS-2000 is an industry-leading scanner that no serious practitioner should be without.

topcon-positioning.eu



HARVEY TileEco®
A DIVISION OF MACSTEEL

The green roof tile

Welcome to the future of roofing – a technological breakthrough from Harvey Roofing Products: the Harvey EcoTile®.

Harvey EcoTile® is a mineral composite roof tile. By utilising 98% waste material, Harvey EcoTile® is 100% recyclable yet provides superior functional benefits to other roofing options.

Harvey EcoTile's® technological design advantage ensures an interlocking, lightweight tile that is low on maintenance, weatherproof and virtually unbreakable in normal use.

Your building's roof is one of its most important elements in function, aesthetics, surface area and investment. Increase its functional performance and green credentials with one innovative product – Harvey EcoTile®.



- Lightweight
- Low Maintenance
- Durable
- Weatherproof
- Attractive
- Easy to Install
- Paintable
- SANS 10400-T
- Waste Material
- 100% Recyclable
- Waterless
- Community Projects



Tel: +27 11 741 5600 www.harveyroofingproducts.co.za

Greenwood City Mall, Meru

A Rising Star in Kenya's Retail Landscape



Developer: Meru Greenwood Park Limited

Architect: Triad Architects

Website: [Fusion Capital](http://FusionCapital.com)/[Greenwood City Mall](http://GreenwoodCityMall.com)

Location: Along the Meru-Nkubu Bypass

Size: 160,000 square feet

Key Features: Retail space, office block, apartments, entertainment zone, food court, green spaces



Introduction

Greenwood City Mall promises to reshape the retail landscape of Kenya, offering not only a shopping destination but a dynamic space where the community converges to experience a harmonious blend of shopping, entertainment, and lifestyle. The development signifies a departure from conventional retail spaces, propelling Meru into a new era of modernity and sophistication. Greenwood City Mall holds the

promise of becoming a hub that caters not just to the material needs of the community but also to their desires for leisure, social interaction, and an enhanced quality of life.



Modern Architecture and Design

The mall's modern architecture is the first captivating element that captures the attention of visitors and passersby alike, setting it apart as a beacon of contemporary elegance in the heart of Meru. The façade of Greenwood City Mall is a harmonious blend of sleek lines, innovative structures, and a conscious effort to incorporate natural elements. Large, strategically placed windows flood the interior with natural light, creating a bright and airy ambiance that enhances the overall shopping experience. The presence of green spaces within the mall is not just an aesthetic choice but a deliberate strategy to create a holistic environment.



Diverse Tenant Mix

Greenwood City Mall's commitment to offering a shopping experience that transcends the ordinary is what elevates the mall from a mere structure to a vibrant destination catering to the multifaceted needs and desires of the community. The mall is set to house a plethora of both local and international brands, creating a retail environment where diversity is celebrated. From high-end fashion boutiques to locally beloved cafes, the tenant mix is carefully curated to ensure there is something for everyone, irrespective of age, taste, or preference.



Community-Centric Approach

Greenwood City Mall is set to be more than just a retail complex; it is destined to be an architectural masterpiece that blends seamlessly with its natural surroundings. The developers have sought to minimize the ecological footprint of the mall, implementing sustainable practices that align with the natural beauty of Meru. The mall's design is not an imposition on the landscape but a respectful coexistence, enhancing both the built environment and the natural surroundings. The inclusion of local brands is a nod to Greenwood City Mall's dedication to supporting the community and fostering a sense of regional identity.



Greenwood City Mall Ownership

The equity invested in Greenwood City is owned circa 84% by funds under the management of Fusion Capital. Fusion Capital investors include Taaleri Real Estate, an African-focused fund. Fusion Capital is an international real estate development company and fund manager, with operations in Kenya, Rwanda, Uganda, and the United Kingdom. Approximately 16% of the equity is owned by an investment club of three families from Meru who contributed land to the Special Purpose Vehicle.

Greenwood City Mall was developed through a Special Purpose Vehicle known as Meru Greenwood Park Limited, which currently owns no other asset other than Greenwood City. When fully built, it will comprise the mall (now up and fully trading), the office block, and the apartments. This ownership structure reflects a collaborative effort between international investment and local community involvement, symbolizing a commitment to both economic development and regional identity. As Greenwood City Mall continues to evolve, it stands as a testament to the power of collaboration in shaping the future of retail and community spaces in Kenya.

Greenwood City Mall's emergence on the outskirts of Meru town is nothing short of a transformative endeavor, set to reshape the retail landscape of Kenya. The anticipation surrounding this project is palpable, as it holds the promise of becoming a hub that caters not just to the material needs of the community but also to their desires for leisure, social interaction, and an enhanced quality of life. The development signifies a departure from conventional retail spaces, propelling Meru into a new era of modernity and sophistication.

Project Managers	TRIAD Architects Ltd. P O Box 30725, 00100, Nairobi Tel : 2320146 ; 0722708632 Contact Person : James Gitoho & George Masinjila E-mail : james.gitoho@triad.co.ke ; george.masinjila@triad.co.ke
Architects:	TRIAD Architects Ltd. P O Box 30725, 00100, Nairobi Tel : +254 020 2320146 ; 0722708632 Contact Person : Cecilia Wahinya E-mail : cecilia.wahinya@triad.co.ke ;
Interior Designers:	Dimensions Interiors Po Box 55459 - 00200, City Square, Nairobi Phone: +254 20 2728491 Contact person: Charity Stromsmo & Cynthia Kosen E-mail: charitywstromsmo@gmail.com ; cynthiakosen@gmail.com
Quantity Surveyors:	Beeque Consultants Ltd. P.o. Box 3280 – 00200, Nairobi Tel:+254 20 3862217, 0722 – 667146, 0733-734537 Contact Person: Mr. John Mburire E-mail: info@beeque.com ; beequeconsultants@gmail.com
Civil/Structural Engineers:	Multiscope Consulting Engineers Ltd Silverpool Office Suites, 3rd Floor, Suite B30 Jabavu Lane, Off Argwings Kodhek Road, Hurlingham P.O. Box 12012 - 00100 Nairobi Contact Person: Eng. S.N. Maugo & Cornelius Keron E-mail: snmaugo@multiscope.co.ke , keronc65@gmail.com ; info@multiscope.co.ke
Electrical Engineers:	Metrocom Consultants Norfolk Towers, Block G, 2nd Floor, Kijabe Street P.O. Box 27090, 00100, Nairobi Tel:020 3572724/5/6 Contact Person: Zachary Macharia, Antony Mwangi, E-mail: Macharia.z@tms-cgroup.com , Mwangi.A@tms-cgroup.com

Mechanical Engineers:	Metrocom Consultants Norfolk Towers, Block G, 2nd Floor, Kijabe Street P.O. Box 27090, 00100, Nairobi Tel: 3572724/5/6 Contact Person: Newton Gatungu, James Kuria E-mail: gatungu.n@tms-cgroup.com ; jkuria13@gmail.com
Marketing Agent:	Citiscap Valuers & Estate Agents Ltd. The Mirage, Tower 1, 9th Floor, Chiromo Road, Westlands P.O. Box 16062 – 00100, Nairobi Tel: 020 3742169; 0708 848481; 0707252525 Email: info@citiscapvaluers.com Contact person: Nelly Mbugua, Peter Ndungu Email: nelly.mbugua@citiscapvaluers.com , pete-ter.ndungu@citiscapvaluers.com ; info@citiscapvaluers.com
Main Contractor:	M/s Mizpah Contractor Agency P. O. Box 62683-00200, NAIRO- BI Tel: (20) 0722287214 Contact person: Jane Nkatha, Fredrick Mwenda, Daniel Kyalo Email: mwenda@fredmarqs.co.ke ; daniekhy@gmail.com ; Mizpahjuba@gmail.com
Electrical installations:	Central Electricals International Limited Terrace Close off Rhapta Road, Nairobi P.O. Box 56111-00200 City Nairobi Tel: +254-20-4446025; +254 714 003496 E-mail: info@centralelectricals.com Contact Person: Patrick Karugu karugu@centralelectricals.com
Plumbing, Drainage, Fire Protection & Mechanical Ventilation Installations:	Allied Plumbers Ltd. P.O Box 45268-00100 Maasai Rd, Nairobi Tel: +254 20 0727531040 E-mail: alliedplumbers@jandu.biz Contact person: Bobby Jandu bobby@jandu.biz
ICT & Security Installations:	Quick Start Africa Ltd. P.O Box 38153-00100, Nairobi Tel: 0715 335 666 Email: kiran@quickstart.africa Contact person: Kiran Kumar
Borehole Drilling & Equipping Installations:	Premier Water Solutions P.O Box 38560-00623 Tel: 0710 970 243, Nairobi Con- tact person: Waiganjo Kamau waiganjo@premierwater.co.ke ; info@premierwater.co.ke

Lifts and Escalators Installations:	KONE (KENYA) Ltd 6th Floor, Trance Towers Building P.O. Box 35174-00100, Nairobi Tel: +25420 2622412/5; Mobile:0708281297 Contact person: Austin Wasonga, Email: info.kone-kenya@kone.com ; austin.wasonga@kone.com
Landscaping:	Eco-Ethics & Development Ltd. P.O Box 666-00618-00100, Nairobi Tel: +254 20 0720 959 007; 0722 866 497/ 0722778930 Contact person: Dr. Stephen Njoka Email: snjokanyaga@gmail.com
Generators:	Ryce Engineering E.A Pharis Kamunyu <pharis@ryce.co.ke> 0722491118
Aluminium Shopfront	Hebatullah Brothers Limited PO Box 41008-00100 info@hebatullah.com ; ammar@hebatullah.com 0716273452; 0722786606

RYCE EAST AFRICA LTD

Rental Power



We are proud to be associated with Greenwood City Mall, Meru



RYCE EAST AFRICA LTD



NAIROBI BRANCH ADDRESS
Kampala Road, Industrial Area, Nairobi
Tel: +254724256665/ +254735985858
EMAILS: ryce@ryce.co.ke

MOMBASA BRANCH ADDRESS
Arch Bishop Makarios Road
Tel: +254732777266
EMAILS: ryce_msa@ryce.co.ke

Conveyor & Industrial Supplies (PTY) LTD

Reg. No. 1982/011524/07

Tel: +27 11 306 3118
713 van Dyk Street, Boksburg East
info@cisjhb.co.za • www.cisjhb.co.za

Level 2 BEE Compliant

33 YEARS OF SERVICE
MANUFACTURING HIGH QUALITY CONVEYOR MECHANICALS SINCE 1982 FOR ALL MINING AND INDUSTRIAL SECTORS.

GEARBOXES
Manufacturing & Repairs

CONVEYOR IDLERS AND FRAMES

CONVEYOR PULLEYS
Manufacturing & Repairs

CONVEYOR BELTING



MIZPAH CONTRACTOR AGENCY

WE ARE PROUD TO BE ASSOCIATED WITH MERU, GREENWOOD CITY MALL AS THE MAIN CONTRACTOR



OUR CONTACTS



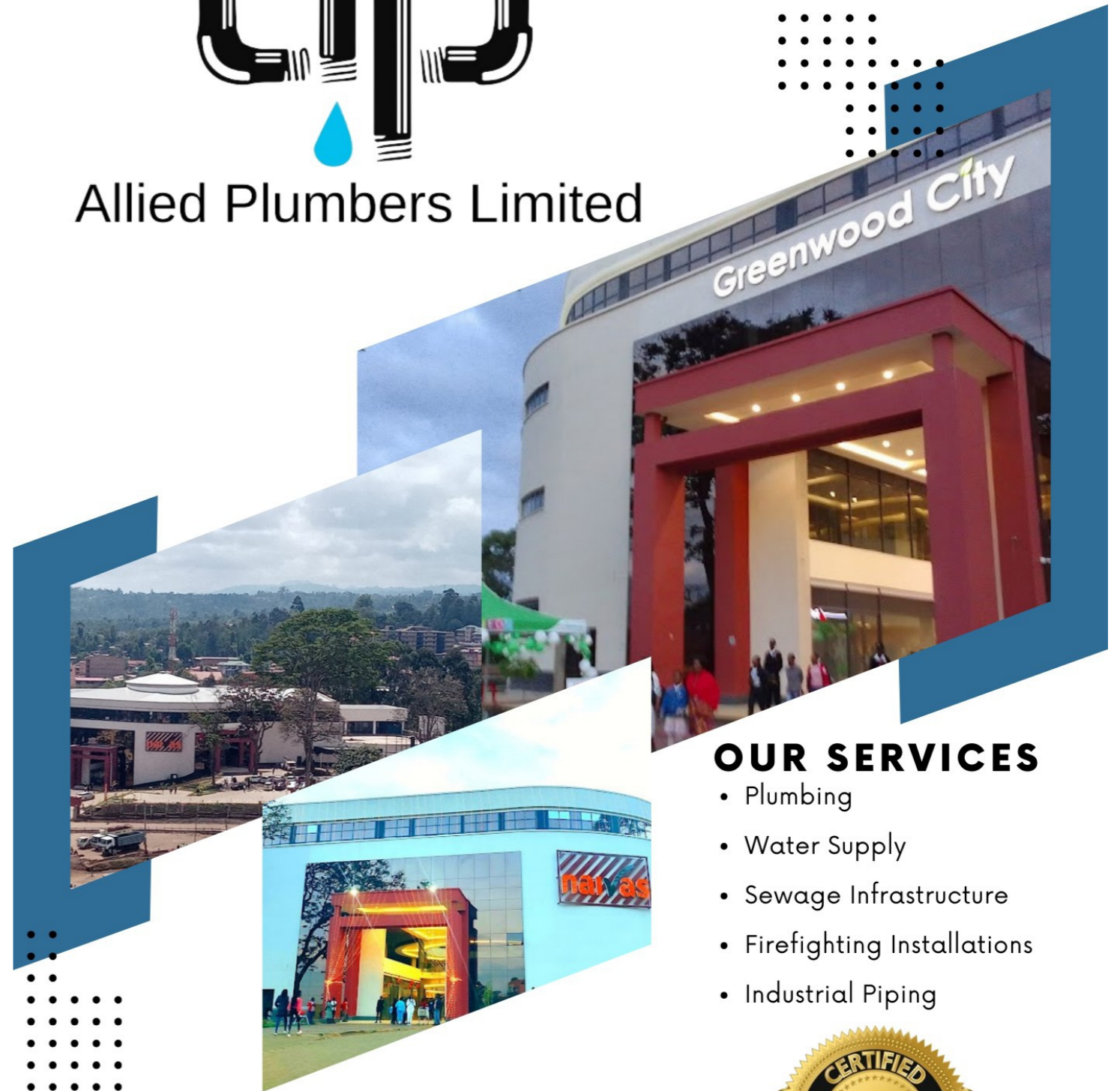
mizpahjuba@gmail.com



0722287214



Allied Plumbers Limited



OUR SERVICES

- Plumbing
- Water Supply
- Sewage Infrastructure
- Firefighting Installations
- Industrial Piping



We are proud to be associated with Greenwood City Mall, Meru as the Plumbing, Drainage , Fire fighting and Mechanical Ventilation Contractors

Call for details
+254 727 531040

For More Information
<https://alliedplumbers.co.ke>

Visit Us
Maasai Road, Mombasa
Road



Quality PRODUCTS & SERVICES

Featured Projects

“

We are here for you and take pride in the work we do. Helping you turn your vision into reality.



Our Divisions

- Glass Projects & Solutions
- Aluminium Projects & Solutions
- Hardware Projects



Phone

0722-786 606
0733-609 643
0721-695 325

Location

Airport North Road, Nairobi



Quality GLASS WORKS

Glass Division

“

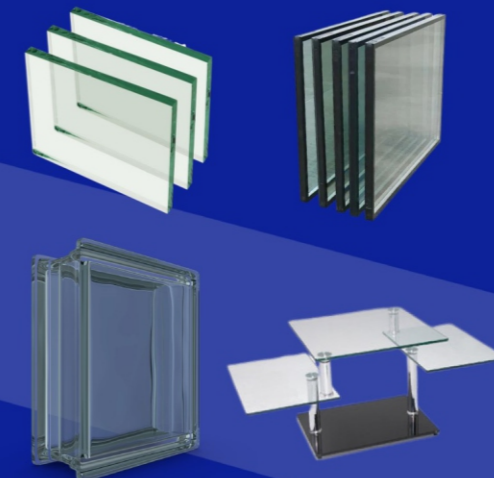
We offer high-quality glass that is imported from reputable glass manufactureres at an affordable price.



Our Products

We are able to meet all the architectural requirement in High Performance Glass as well as Safety Laminated Glass, Anti Bandit and Bullet Resistant Glass, Tempered Glass, which are all available at very competitive prices.

Glass



Phone

0722-786 606
0733-609 643
0721-695 325

Location

Airport North Road, Nairobi



KENYA BUILDING & CONSTRUCTION MARKET ANALYSIS 2024

Kenya stands as the proud home to Africa's towering skyscrapers, with numerous projects underway in both governmental and private sectors. A total of 17 skyscrapers have already surpassed the 100-meter mark, showcasing the nation's commitment to urban development.

This anticipated growth is attributed to strategic investments in pivotal sectors such as transportation, electricity, housing, and manufacturing.

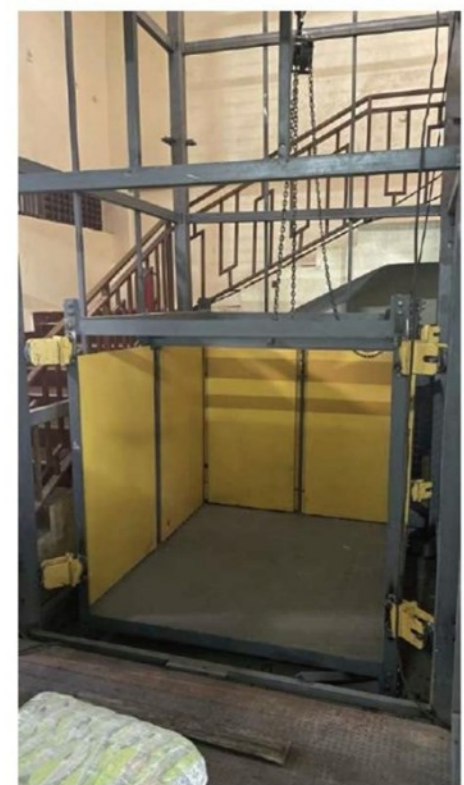
In 2021, the Kenyan construction market exhibited a robust value of \$16.6 billion, and projections suggest an Annual Average Growth Rate (AAGR) exceeding 5% from 2024 to 2026.

A key initiative involves the construction of 10,000 housing units, contributing significantly to the sector's expansion.

The latest data from the Kenya National Bureau of Statistics (KNBS) for Q3 2022, coupled with leading indicators, indicates a robust economic performance.



GAHIR ENGINEERING WORKS LTD.
Mechanical Engineers & Manufacturers



Gahir Complex , Pate Road
P.O. BOX 78252 - 00507 Nairobi,
Tel: 0203540541/428, 0202042837,
0202333541
Cell: +254722510238, 0722510237,
+254722758299, +254729853376
Email: info@gahirdesco.co.ke
Website: www.gahirdesco.co.ke



Goods lift for multi-story buildings, manufactured and serviced by Gahir Engineering Works Ltd

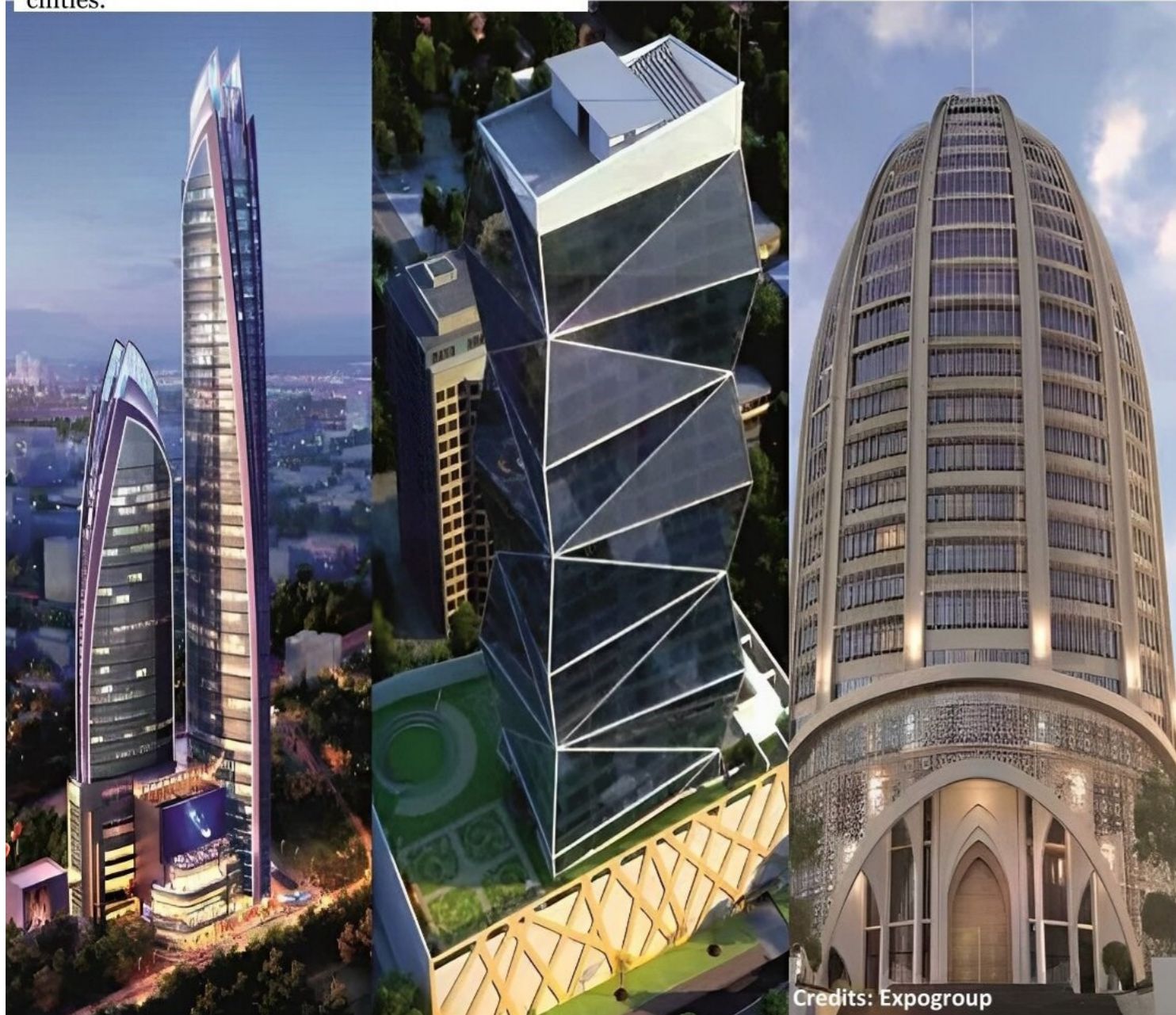
The nation experienced a notable 4.7% increase in Real GDP during this period, primarily fueled by vibrant activities in wholesale and retail trade, education, electricity and water, as well as the real estate sector. The surge in construction activity can be directly linked to Kenya's flourishing economy.

The National Construction Authority (NCA) processed 8,154 project registration applications in the previous year, as revealed in the recent Status of the Build Environment Report by AAK. Notably, the approved projects carried a total cost of Sh280.9 billion.

Looking ahead to 2024, Kenya's construction landscape includes a 30 million euros (\$32 million) investment in constructing eight sports facilities.

A significant infrastructure project is the development of a 104km four-lane stretch from Kisian in Kisumu to the Busia border town, accompanied by an 11km link road between Kisian and Kisumu bypass. Additionally, a 127km stretch between Jinja and Malaba. This initiative is an extension of the \$1.48 billion Kampala-Jinja expressway, slated for completion by 2025.

Kenya Railways has initiated Phase 1 of The Nairobi Railway City project, an endeavor with an estimated cost of KES12 billion (\$95 million). The groundbreaking ceremony, held at the Nairobi Central Railway station in December, marked the commencement of this transformative urban development project. The Kenyan Government's vision for 'The Nairobi Railway City' involves the redevelopment of Nairobi Central Railway station and its environs into a multimodal, transit-oriented urban hub.



Industrial robotic solutions

LAND • AIR • WATER

WHY ACCESSIONAL?

- UTILISES STATE OF THE ART TECHNOLOGY
- ELIMINATES DANGER AND SAVES COSTS
- IMPORTS MACHINES FROM LEADING GLOBAL BRANDS
- CUSTOM, LOCALLY PRODUCED ROBOTIC EQUIPMENT AND SOFTWARE
- SERVICES MULTIPLE INDUSTRY SECTORS
- CUSTOM SOFTWARE DEVELOPED IN-HOUSE AND TAILORED TO CLIENT'S NEEDS, ENSURING JOB SPECIFIC DATA VISUALISATION AND REPORTING
- VIRTUAL REALITY SIMULATIONS ALSO AVAILABLE

ACCESSIONAL specialises in robotic solutions for confined and dangerous spaces and, in doing so, offer our clients the ability to remove employees from dangerous situations – placing them in safe and remote locations whilst performing high-risk tasks. As the official African agents for **Inuktun** and **Seamor Marine**, we offer products from some of the leaders in the field of robotics. We also run our own in-house engineering department with qualified roboticists, developing tailor-made robotic solutions to suit any client's needs.

ACCESSIONAL
 CONFINED AND DANGEROUS SPACE SPECIALISTS

PLEASE CONTACT US TODAY FOR MORE INFORMATION

+27 [0]10 900 4073

www.accessential.co.za

www.ryonicrobotics.com





Oil Seals & Bearings Centre Ltd

Empowering East Africa's Industries: The Legacy of Oil Seals & Bearings Centre Ltd

In the bustling landscape of East Africa's industrial sector, there's a name that stands tall, recognized for its reliability, quality products, and unwavering commitment to customer satisfaction – Oil Seals & Bearings Centre Ltd (OSBCL). With over four decades of experience under its belt, OSBCL has cemented its position as a leading supplier of bearings and oil seals, serving a diverse array of industries across Kenya and beyond.



industries ranging from agriculture to manufacturing, construction, and transportation. Its extensive clientele, comprising over 2000 companies, speaks volumes about its unparalleled service and product quality.



A Legacy of Excellence

For more than 44 years, OSBCL has been the backbone of various sectors in East Africa. Based in Nairobi with operations spanning across Mombasa and other parts of Kenya, OSBCL has emerged as the go-to destination for



Unraveling the Offerings

OSBCL prides itself on being the principal distributor in East Africa for renowned international brands such as TIMKEN (USA), SNR-NTN (France), and INA-FAG (Germany), alongside a comprehensive stock of Japanese bearing brands including Koyo, NTN, NACHI, and KG. Moreover, the company boasts a wide array of transmission products like sprockets, chain couplings, vee pulleys, and vee belts, catering to the diverse needs of its clientele.

SCHAEFFLER

FAG



FPe seals



TTO

TIMKEN

Beyond Bearings and Seals

While bearings and oil seals remain at the core of OSBCL's offerings, its product portfolio extends far beyond. From custom-made seals to maintenance products, lubrication solutions, and transmission products, OSBCL ensures that its clients' requirements are not just met but exceeded. With a staggering inventory of over 150,000 product items in stock, the company stands ready to fulfill even the most specialized demands of its customers.

Commitment to Quality and Integrity

OSBCL's commitment to excellence is further underscored by its ISO 9001:2015 certification and its consistent inclusion in Kenya's Top 100 Mid-Sized Companies since 2017. Upholding the highest standards of integrity, the company places customers and suppliers at the heart of its operations, fostering long-term relationships built on trust, fairness, and mutual respect.



Technical Expertise and Support

At OSBCL, customer satisfaction isn't just a goal; it's a philosophy engrained in every aspect of the business. The company's technical team offers a range of specialist services, including on-site maintenance, custom design capabilities, and hands-on training, aimed at enhancing operational efficiency and maximizing productivity for its clientele.

Expanding Horizons

In addition to its core business of bearings and oil seals, OSBCL has ventured into associated sectors through its associate companies. Express Nova Ltd, specializing in trading, logistics, and project management, and Unique Mining Ltd, focusing on the extraction and processing of industrial minerals, are integral parts of the OSBCL Group, further diversifying its offerings and expanding its footprint in the market.



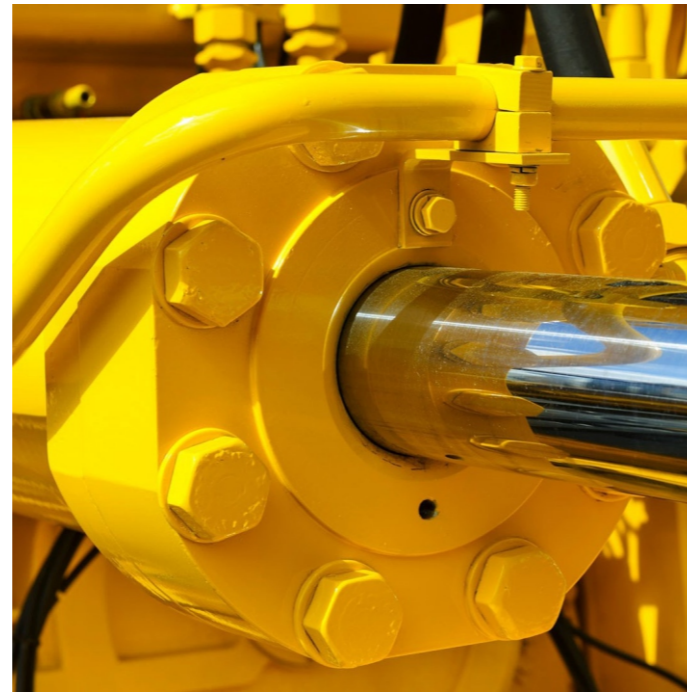
Unique Mining Limited

Calcium Carbonates & Industrial Minerals

Empowering East Africa's Industries

As East Africa's most reliable supplier of bearings and oil seals, OSBCL remains committed to its vision of empowering industries through innovative solutions, unwavering integrity, and customer-centricity. With a legacy built on trust and excellence, the company continues to be the driving force behind the region's industrial growth and prosperity.

In the dynamic landscape of East Africa's industrial sector, Oil Seals & Bearings Centre Ltd stands as a beacon of reliability, integrity, and unparalleled service – a testament to its enduring commitment to excellence.



SERVICING HYDRAULIC CYLINDERS



MAINTENANCE PRODUCTS & LUBRICATION



CUSTOM MADE SEALS



BEARINGS



SEALS



TRANSMISSION PRODUCTS



OUR CONTACTS

Location:

20-DAR-ES-SALAAM ROAD, INDUSTRIAL AREA

Address:

P.O. BOX 59000-00200, NAIROBI, KENYA

[+254 20 6536655/6/7](tel:+254206536655) | [+254 20 6651622](tel:+254206651622) | [+254 20 2613193](tel:+254202613193)

Sales Tel:

[+254 757 755353](tel:+254757755353) | [+254 735 755353](tel:+254735755353) | [+254 777 553554](tel:+254777553554)

Email:

info@osbcl.com

sales@osbcl.com

accounts@osbcl.com

osbcl12@gmail.com



Oil Seals & Bearings Centre Ltd



OIL SEALS AND BEARING CENTRE LIMITED

@Oilseals_osbcl



WOTECH

Expert in Water Solutions

OUR SERVICES:

- ◆ BOREHOLE DRILLING
- ◆ HYDROLOGICAL SURVEY
- ◆ BOREHOLE EQUIPPING
- ◆ BOREHOLE AUTHORIZATION
- ◆ BOREHOLE SOLARIZATION
- ◆ WATER PURIFICATION
- ◆ STEEL TOWER & TANK CONSTRUCTION
- ◆ WATER DISTRIBUTION SYSTEMS
- ◆ MAINTENANCE CONTRACTS

WHY CHOOSE US?

- ✓ SUSTAINABLE SOLARIZATION
- ✓ EFFICIENT BOREHOLE EQUIPPING
- ✓ COMPREHENSIVE WATER TREATMENT
- ✓ RESULTS-DRIVEN APPROACH

WE ARE PROUD TO BE ASSOCIATED WITH
OIL SEALS AND BEARING CENTRE LTD

Contact us
0722 206 309

Email Us
SALES@WOTECHKENYA.COM

WWW.WOTECHKENYA.COM



Gicheha FARM

Your trusted partner for premium agricultural products and services.

Our products and services.

- 🌱 Quality Seeds & Seedlings
- 🌱 Cutting-Edge Farming Technology
- 💧 Irrigation Systems & Solutions
- 🚜 Farm Machinery & Equipment



WE ARE PROUD TO BE ASSOCIATED
WITH OIL SEALS AND BEARINGS
CENTRE LIMITED

☎ 0739 094259
🌐 www.gicheha.co.ke
✉ gichehafarm@gmail.com
📍 Ruiru, Kenya

NIDPREE LIMITED

Need a Lift? NIDPREE Forklifts!

Get reliable forklifts for your business. Sales, rentals & service.
Kenya's #1 choice!



WE ARE PROUD TO BE ASSOCIATED
WITH OIL SEALS AND BEARINGS
CENTRE LIMITED



Contact us

NIDPREE LIMITED

Bamburi Road No2, Nairobi, Kenya

TEL: 0728 664777

Website: www.nidpree.co.ke

Building Secure: Protecting Your Construction Site from Threats and Hazards



Construction sites, bustling with activity and potential, are also vulnerable to a range of security challenges that can jeopardize the success of a project. From theft and vandalism to safety hazards, the risks are significant. Establishing a robust site protection strategy is essential to mitigate these threats and create a secure environment for both workers and valuable assets.

The Importance of Security

Deter Theft and Vandalism

Construction sites are often targeted by criminals seeking valuable equipment, materials, and tools. The financial losses, project delays, and safety hazards resulting from theft and vandalism can be substantial. A proactive security approach is essential to deter potential threats.

Prevent Unwanted Access

Uncontrolled access to construction sites poses risks such as injuries, property damage, and potential liability issues.

Unauthorized individuals, trespassers, or curious onlookers can compromise the safety and integrity of the site. Effective security measures are crucial to prevent unwanted access.

Maintain a Safe Work Environment

Construction sites inherently involve dangers such as tripping hazards, falling objects, and heavy machinery operation. Security measures not only deter unauthorized entry but also contribute to maintaining a safe work environment for construction workers.

Securing Your Site

Physical Barriers

Visible deterrents, such as fences, gates, and security cameras, act as physical barriers to unauthorized entry. Employ robust materials for fencing and ensure proper lighting to enhance visibility during nighttime hours.

Access Control

Implement a comprehensive access control system to track and manage site access. This includes issuing ID badges for authorized personnel, logging entry and exit times, and limiting access to specific areas based on roles and permissions.

Security Personnel

Hire trained security guards or patrols to provide a visible presence on-site. Their role is to deter potential threats, respond promptly to emergencies, and ensure the overall security of the construction site.



Technology Solutions

Utilize advanced technology, including alarm systems, motion detectors, and electronic access control systems. These tools help monitor activity, trigger alerts in case of unauthorized entry or suspicious behavior, and enhance overall site security.

Communication and Training

Effective communication is crucial in maintaining site security. Conduct regular training sessions to educate personnel on site safety procedures, security protocols, and reporting processes. Fostering a culture of awareness contributes to the overall success of the security strategy.





Regular Inspections

Conduct regular inspections of the site perimeter, security measures, and equipment. Identifying and addressing potential vulnerabilities promptly enhances the effectiveness of the security strategy.



Building a Secure Future

Protecting a construction site is an ongoing process that requires vigilance and a proactive approach. By implementing a comprehensive security strategy, utilizing appropriate technology, and fostering a culture of safety awareness, construction project managers can minimize risks, safeguard assets, and ensure a safe and successful construction experience for everyone involved. A secure construction site lays the foundation for a successful and thriving project.

Beyond Security

While security measures are paramount, additional considerations contribute to the overall protection of the construction site:

Site Management

Maintain a clean and organized site to reduce clutter and tripping hazards. An organized environment not only enhances safety but also facilitates effective security measures.

Inventory Management

Implement a robust system to track and manage tools and materials. This reduces the risk of theft and loss, ensuring that resources are utilized efficiently throughout the construction process.



GEBS Security Group is offering exceptional security services through trained, licensed and an expert team of professionals. Being one of the leading security companies in South Africa, our unsurpassed protection is rendered at the shopping arcades, construction sites as well as industrial locations. We are proficient in providing comprehensive security solutions.

Our Services:

Building & Construction Site Protection

Asset Protection

Industrial & Residential Protection



These Construction Projects Were built By Group Five.



Email Us: echaweza@gebs-group.com

YOU CREATE THE VISION
WE CREATE THE BRICK

DISCOVER THE POSSIBILITIES.



Corobrik's clay face brick & paving range offers you versatility in design & durability that lasts a lifetime.



www.corobrik.co.za | info@corobrik.co.za